

DSC

A Tyco International Company



NORTH AMERICA CATALOG 2011/2012

▼ [proceed to contents](#)



DSC

A Tyco International Company



Home Security Systems from DSC



Protecting the things you value most in life.

Compatibility

DSC products are designed to work with existing or future products.

Upgradable

DSC products allow you to expand and enhance systems with no replacement necessary.

Flexibility

DSC products allow you to build a system that works for you with over 1000 configurable items.

Durability

DSC products are designed to work, last and withstand extreme situations.

Reliability

DSC products go beyond industry-required testing to ensure reliability and product life.

Quality

DSC is committed to Six Sigma's utilization of consistent and predictable processes to improve what the customer sees and feels.



North American Edition



Click on any heading
to access content.
Hit 'esc' to exit full screen mode.



panels, keypads & modules

1-2	Wireless
3-10	PowerSeries
11	Audio Verification
12	Integration
13-16	MAXSYS®

sensors & accessories

18-23	Wireless
24-25	Addressable
26-30	Motion Detectors
31	Glassbreak Detectors
32	Smoke Detectors

communications

34-38	Transmitters
40	Sur-Gard®
41	Connect 24®

software solutions & services

43-44	Software Solutions
45	Services & Support

▲ [return to contents](#)



panels, keypads & modules

Wireless



PC9155 ALEXOR 2-Way Wireless Panel

- 32 wireless zones, 16 wireless keys (without using a zone slot)
- Template programming
- 16 user codes, 1 master code and 1 maintenance code
- Account code error checking
- Alternate communications via GPRS and IP
- Onboard siren at 85dB
- 2 Input/Output terminals
- 200mA Aux Output
- 500 event buffer
- 24Hr Battery backup
- Wall and case tamper
- Independent opening and closing door chime control
- Seamless quick enroll and placement testing

Approval Listings: FCC/IC, UL/ULC, SIA CP-01, CSFM



WT5500 2-Way Wireless Wire-Free Keypad

- 2x16 full message display
- Intuitive clock programming
- Multiple door chime
- Ambient light sensor
- Display and keymat backlighting
- Outdoor temperature display
- Wall and Deskstand* mount
- † Proximity Arm/Disarm (WT5500P Only)
- Installer's programming
- Multi-Language support
- 5 programmable function keys
- 3 one-touch emergency keys
- Tamper switch
- Nominal battery life – 1 year
- Compatible with ALEXOR and IMPASSA
- Visual armed status during sleep mode

* WT5500D or WT5500DMK

Approval Listings: FCC/IC, UL/ULC, SIA CP-01, CSFM

IMPASSA (SCW9057) Self Contained 2-Way Wireless Security System

- Supports 32 wireless zones and 16 wireless keys (without using a zone slot)
- Built-in 2-way audio VOX and push-to-talk alarm communication via phone line and cellular
- Integrated cellular module (3G/IP) with 3G signal strength read-out
- Real time clock update using 3G module
- Remote firmware upgrade via 3G or IP
- 2-way wireless support
 - 1 keypad
 - 2 sirens
 - 16 wireless keys
- Easy wireless device enrollment process
- Full 32-character programmable labels
- Enlarged keypad buttons
- 5 programmable function keys
- Individual FAP keys
- 17 user codes
- 128 event buffer
- False alarm reduction features (CP-01)
- Outdoor temperature display

Approval Listings: FCC/IC, UL/ULC, SIA CP-01, CSFM



PowerSeries 9047 Self-Contained Wireless Alarm System

- Smallest footprint of any self-contained wireless alarm system currently available
- Aesthetically pleasing design
- Built-in 2-way audio VOX and push-to-talk alarm communication
- Supports 32 wireless zones and 16 wireless keys (without using a zone slot)
- Full 32-character programmable labels
- Enlarged keypad buttons
- 5 programmable function keys
- Intuitive clock programming
- Input/Output terminals can be programmed to operate as zone inputs or programmable outputs
- Individual FAP keys
- Wireless quick enroll
- 2 PGM outputs
- Template programming
- 17 user codes
- 128 event buffer
- 1 partition

Approval Listings: FCC/IC, UL/ULC, SIA CP-01, CSFM



PowerSeries



PC1616 PowerSeries Control Panel

- 6 on-board zones
- Expandable to 16 hardwired zones
- Expandable to 32 wireless zones
- 2 PGM outputs: expandable to 14 (PC5204, PC5208)
- Template programming
- Connect up to 8 supervised keypads with keypad zones
- 2 partitions
- 500-event buffer
- 48 user codes
- CP-01 compliant

Approval Listings: FCC/IC, UL/ULC, SIA CP-01, CSFM



PC1832 PowerSeries Control Panel

- 8 on-board zones
- Expandable to 32 hardwired zones
- Expandable to 32 wireless zones
- 2 PGM outputs: expandable to 14 (PC5204, PC5208)
- Template programming
- Connect up to 8 supervised keypads with keypad zones
- 4 partitions
- 500-event buffer
- 72 user codes
- CP-01 compliant

Approval Listings: FCC/IC, UL/ULC, SIA CP-01, CSFM



PC1864 PowerSeries Control Panel

- 8 on-board zones
- Expandable to 64 hardwired zones
- Expandable to 32 wireless zones
- 4 PGM outputs: expandable to 14 (PC5204, PC5208)
- Template programming
- Connect up to 8 supervised keypads with keypad zones
- 8 partitions
- 500-event buffer
- 95 user codes
- CP-01 compliant

Approval Listings: FCC/IC, UL/ULC, SIA CP-01, CSFM

TL260GS (Internet and GPRS) Alarm Communicator and GS2060 GPRS Alarm Communicator.

Both Integrated Communicators offer options for uploading/downloading over the Internet network and are compatible with PC1616/PC1832/PC1864 PowerSeries control panels. (See pages 34 & 35 for product details)

Control Panel Overview | PowerSeries Feature Comparison Chart

Features	PC1616	PC1832	PC1864
Number Of On-Board Zones	6	8	8
Total Zones Supported	32	32	64
Keypad Zone Expansion	Yes	Yes	Yes
Hardwired Zone Expansion	Yes	Yes	Yes
Hardwired Zones	16 (1 x PC5108)	32 (3 x PC5108)	64 (7 x PC5108)
Wireless Zone Expansion	Yes	Yes	Yes (32 Wireless)
Addressable Zone Expansion	Yes	Yes	Yes (32 Addressable)
Number of Keypads	8	8	8
Number of Wireless Receivers	4 (PC5320)	4 (PC5320)	4 (PC5320)
On-Board PGM Outputs	PGM 1 = 50 mA PGM 2 = 300 mA	PGM 1 = 50 mA PGM 2 = 300 mA	PGM 1, 3, 4 = 50 mA PGM 2 = 300 mA
Number of Main Panel Low-Current PGM Outputs	1	1	3
Number of Main Panel High-Current PGM Outputs	1	1	1
PGM Expansion	8 x 50 mA (PC5208) 4 x 500 mA (PC5204)	8 x 50 mA (PC5208) 4 x 500 mA (PC5204)	8 x 50 mA (PC5208) 4 x 500 mA (PC5204)
Number of Additional Low-Current PGM Outputs	8	8	8
Number of Additional High-Current PGM Outputs	4	4	4
Number of Access Codes	47+ Master Code	71+ Master Code	94+ Master Code
Number of Partitions	2	4	8
Panel Event Buffer	500	500	500
Phone Line Supervision	Yes	Yes	Yes
Siren Supervision	Yes	Yes	Yes
Bell Output	12 V / 700 mA (cont)	12 V / 700 mA (cont)	12 V / 700 mA (cont)
SIA CP-01 Compliant	Yes	Yes	Yes
Event-Initiated Personal Paging	Yes	Yes	Yes
Upload/Download Support	Yes	Yes	Yes
Direct-Connect (PC Link) Downloading Support	Yes	Yes	Yes
DLS2002SA End-User Downloading Support	Yes	Yes	Yes
Internet Alarm Communications	Yes	Yes	Yes
Audio Alarm Verification	Yes	Yes	Yes
Cellular Alarm Communications	Yes	Yes	Yes
Battery Required	4 Ah / 7 Ah / 14 Ahr	4 Ah / 7 Ah / 14 Ahr	4 Ah / 7 Ah / 14 Ahr



PK5500 PowerSeries 64-Zone LCD Full-Message Keypad RFK5500 with built-in wireless receiver

- 8 language support
- Global partition status
- Full 32-character programmable labels
- Modern, slim-line landscape keypad
- Enlarged keypad buttons
- 5 programmable function keys
- Intuitive clock programming*
- Input/Output terminal can be programmed to operate as a zone input, programmable output or as a low temperature sensor
- 3 one-touch emergency keys
- Multiple door chime per zone
- Adjustable backlight and keypad buzzer
- Wire channel
- Dual wall-mount and front cover tamper
- Easy-to-install mounting hinge
- Surface or single-gang box mount
- AC status ICON
- Available with English function keys
- RFK5500 includes all of the same features and supports 32 wireless zones and 16 wireless keys

* Feature only available with new PowerSeries control panels (PC1616, PC1832 and PC1864)

Approval Listings: FCC/IC, UL/ULC, SIA CP-01, CSFM



PK5501 PowerSeries 64-Zone LCD Picture Icon Keypad RFK5501 with built-in wireless receiver

- Modern, slim-line landscape keypad
- Enlarged keypad buttons
- 5 programmable function keys
- Input/Output terminal can be programmed to operate as a zone input, programmable output or as a low temperature sensor
- 3 one-touch emergency keys
- Multiple door chime per zone
- Adjustable backlight and keypad buzzer
- Wire channel
- Dual wall-mount and front cover tamper
- Easy-to-install mounting hinge
- Surface or single-gang box mount
- AC status ICON
- Available with English function keys
- RFK5501 includes all of the same features and supports 32 wireless zones and 16 wireless keys

Approval Listings: FCC/IC, UL/ULC, SIA CP-01, CSFM



PK5516 PowerSeries 16-Zone LED Keypad RFK5516 with built-in wireless receiver

- Modern, slim-line landscape keypad
- Enlarged keypad buttons
- 5 programmable function keys
- Input/Output terminal can be programmed to operate as a zone input, programmable output or as a low temperature sensor
- 3 one-touch emergency keys
- Multiple door chime per zone
- Adjustable backlight and keypad buzzer
- Wire channel
- Dual wall-mount and front cover tamper
- Easy-to-install mounting hinge
- Surface or single-gang box mount
- AC status ICON
- RFK5516 includes all of the same features and supports 32 wireless zones and 16 wireless keys

Approval Listings: FCC/IC, UL/ULC, SIA CP-01, CSFM

PK5508 PowerSeries 8-Zone LED Keypad RFK5508 with built-in wireless receiver

- Modern, slim-line landscape keypad
- Enlarged keypad buttons
- 5 programmable function keys
- Input/Output terminal can be programmed to operate as a zone input, programmable output or as a low temperature sensor
- 3 one-touch emergency keys
- Adjustable backlight and keypad buzzer
- Wire channel
- Dual wall-mount and front cover tamper
- Easy-to-install mounting hinge
- Surface or single-gang box mount
- AC status ICON
- RFK5508 includes all of the same features and supports 32 wireless zones and 16 wireless keys
- Multiple door chime per zone

Approval Listings: FCC/IC, UL/ULC, SIA CP-01, CSFM



LED5511Z PowerSeries 8-Zone LED Keypad

- Modern, slim-line portrait keypad
- Large, backlit buttons on keypad for trouble-free viewing and activation
- 4 programmable function keys
- Dual FAP keys
- Dual tamper support
- Zone input
- Surface or single-gang box mount
- Wire channel

Approval Listings: FCC/IC, UL/ULC



LCD5511 PowerSeries 64-Zone Icon LCD Keypad

- Modern, slim-line portrait keypad
- Large, backlit buttons on keypad for trouble-free viewing and activation
- Input/Output terminal can be programmed to operate as a zone input, programmable output or as a low temperature sensor
- 4 programmable function keys
- 8 partition support
- Dual FAP keys
- Wire channel
- New AC status ICON
- Intuitive symbols and backlit display

Approval Listings: FCC/IC, UL/ULC



PC1555RKZ PowerSeries 8-Zone LED Keypad

- LED status lights for zones and status functions
- Zone input

Approval Listings: FCC/IC, UL/ULC, CSFM



Keypad Overview | PowerSeries Keypad Features

General Features	PK5500*	PK5501*	PK5516*	PK5508*
Display Type	LCD/ALPHA	LCD/FIXED	LED	LED
Zone Support	64	64	16	8
Partition Support	8	8	8	8
Number of Function Keys	5	5	5	5
Dedicated Function Keys	Yes	Yes	Yes	Yes
Dedicated FAP Keys	Yes	Yes	Yes	Yes
Dual FAP Keys	No	No	No	No
Key Size	Large	Large	Large	Large
AC Status LED	Yes	Yes	Yes	Yes
Integrated Low Temperature Sensor	Yes	Yes	Yes	Yes
Zone Input	Yes	Yes	Yes	Yes
PGM Output	Yes	Yes	Yes	Yes
DEOL Zone Supervision	Yes	Yes	Yes	Yes
Intuitive Clock Programming	Yes	No	No	No
Backlighting Adjustment Control	Yes	Yes	Yes	Yes
Buzzer Adjustment Control	Yes	Yes	Yes	Yes
Multiple Chime Per Zone	Yes	Yes	Yes	Yes
Hardware				
Bezel Color	White	White	White	White
Soft/Hard Lens	Hard	Hard	Hard	Hard
Profile	Landscape	Landscape	Landscape	Landscape
* Integrated RF Receiver Models	RFK5500	RFK5501	RFK5516	RFK5508
Buzzer/Backlighting Adjustment Retained After Power Loss	Yes	Yes	Yes	Yes
"Hands Free" Installation Hinge	Yes	Yes	Yes	Yes
Wire Channel	Yes	Yes	Yes	Yes
Single-Gang Box Mount	Yes	Yes	Yes	Yes
Double-Gang Box Mount	Yes	Yes	Yes	Yes
Case Tamper (Dual Tamper Support)	Yes	Yes	Yes	Yes

* RFK versions of these keypads are available with a built-in wireless receiver and support 32 wireless zones and 16 wireless keys

Keypad Overview | PowerSeries Keypad Features (continued)

General Features	PC1555RKZ	LCD5511	LED5511Z
Display Type	LED	LCD/FIXED	LED
Zone Support	8	64	8
Partition Support	2	8	2
Number of Function Keys	0	4	4
Dedicated Function Keys	No	No	No
Dedicated FAP Keys	Yes	No	No
Dual FAP Keys	No	Yes	Yes
Key Size	Small	X-Large	X-Large
AC Status LED	No	No	No
Integrated Low Temperature Sensor	No	Yes	No
Zone Input	Yes	Yes	Yes
PGM Output	No	Yes	No
DEOL Zone Supervision	No	No	No
Intuitive Clock Programming	No	No	No
Backlighting Adjustment Control	No	No	No
Buzzer Adjustment Control	No	Yes	Yes
Multiple Chime Per Zone	No	Yes	No
Hardware			
Bezel Color	Beige	White	White
Soft/Hard Lens	Soft	Soft	Soft
Profile	Portrait	Portrait	Portrait
* Integrated RF Receiver Models	N/A	N/A	N/A
Buzzer/Backlighting Adjustment Retained After Power Loss	No	No	No
"Hands Free" Installation Hinge	No	No	No
Wire Channel	No	Yes	Yes
Single-Gang Box Mount	Yes	Yes	Yes
Double-Gang Box Mount	No	No	No
Case Tamper (Dual Tamper Support)	No	Yes	Yes

* RFK versions of these keypads are available with a built-in wireless receiver and support 32 wireless zones and 16 wireless keys



PC5100 PowerSeries Addressable Zone Expander

- Connect up to 32 addressable detectors (AML)
- Detectors can be home-run, t-tapped or daisy chained
- Easy detector enroll process
- Compatible with PC1616, PC1832 and PC1864 control panels

Approval Listings: FCC/IC, UL/ULC, CSFM



PC5108 PowerSeries 8-Hardwire Zone Expander

- Adds 8 hardwire zones
- AUX power, 125 mA (PTC protected)
- Compatible with PC1616, PC1832 and PC1864 control panels

Approval Listings: FCC/IC, UL/ULC, CSFM



RF5132-433 PowerSeries Wireless Receivers

- Supports 32 wireless zones, 16 wireless keys
- All wireless detectors are fully supervised for communication integrity
- Compatible with all PowerSeries control panels

Approval Listings: FCC/IC, UL/ULC



PC5200 & PC5204 PowerSeries Power Supply Modules

- Fully supervised for AC failure, low battery and AUX failure
- PC5204 adds 4 programmable high current voltage outputs: rated at 1Amp @ 12 VDC, output #1 can be used as a supervised bell output
- Compatible with PC1616, PC1832 and PC1864 control panels
- Connect one PC5204 and up to four PC5200 supervised modules on a system
- Provides up to 1 Amp @ 12 VDC

Approval Listings: FCC/IC, UL/ULC, CSFM



PC5208 PowerSeries Programmable Output Module

- Provides 8 low current (50 mA) PGM voltage outputs
- Compatible with PC1616, PC1832 and PC1864 control panels

Approval Listings: FCC/IC, UL/ULC, CSFM

PC5320 Multiple Wireless Receiver Module

- Multi-frequency support for combination of 900/433 MHz receivers
- Compatible with all PowerSeries control panels
- Can be used to connect up to 4 wireless receivers for increased coverage

Approval Listings: FCC/IC, UL/ULC



PC5400 Printer Interface Module

- Compatible with PC1616, PC1832 and PC1864 control panels
- Can be used to support a serial printer

Approval Listings: FCC/IC, UL/ULC, CSFM



ESCORT 5580TC Telephone Interface & Automation Control Module

- Turns any touch-tone phone into a talking keypad
- Built-in X-10 interface: supports up to 32 X-10 devices, 16 schedules, 8 modes
- Compatible with PC1616, PC1832 and PC1864 control panels
- Programmable labels: 6 words per label, 240+ word library

Approval Listings: FCC/IC, UL/ULC



PC5601 Status Module

- Tri-color LED provides security system status at a glance
- Standard single-gang footprint
- Sleek plastic enclosure complements home décor
- Color-coded wiring harness included
- Only supports partition 1
- KEYBUS-compatible with all PowerSeries control panels



Audio Verification



PC5950 Universal 2-Way Vox Audio Verification Module

- Supports both 2-way audio VOX and push-to-talk verification
- Supports 4 microphones and 4 speakers
- KEYBUS direct connect allows all programming to be performed at the system keypad or remotely using DLS2002 software
- KEYBUS compatible with all PowerSeries control panels
- Universal installation compatibility with any control panel using either PGM and/or Bell dry contact outputs
- Silent/Listen-in functionality on hold-up alarms (activates only when an alarm occurs)
- User call-in feature

Approval Listings: FCC/IC



PC5961 Stand-Alone Audio Station

- Equipped with speaker/microphone
- New modern look
- Specifically designed for 2-way voice verification
- 4-wire connection to module
- Surface or single-gang box mount
- Compatible with PC5950 and PC5900 modules

Approval Listings: FCC/IC



PC5962 Contoured Audio Station

- Equipped with speaker/microphone
- Fits seamlessly to side of PK/RFK series of keypads
- Specifically designed for 2-way voice verification
- 4-wire connection to module
- Compatible with PC5950 and PC5900 modules
- New modern look

Approval Listings: FCC/IC



PC5964 Large Speaker Station

- Equipped with speaker/microphone
- New modern look
- Specifically designed for 2-way voice verification
- Bell follower functionality (replaces internal sounder on premises PC5950 only)
- 4-wire connection to module
- Surface or single-gang box mount
- Compatible with PC5950 and PC5900 modules

Approval Listings: FCC/IC

Integration



IT-100 PowerSeries Integration Module

- Bi-directional RS-232 interface
- Real-time zone status
- Fully programmable
- 4-wire hook-up to KEYBUS
- Virtual keypad mode
- Supported by many integration drivers
- Compatible with all PowerSeries control panels

Approval Listings: FCC/IC



IT-120 PowerSeries Integration Module

- Specialty module for integrating DSC security with Lifeware software
- Standard RJ-45 Ethernet connection using Devices
- Profile for Web Services (DPWS)
- DPWS TCP/IP communication
- 4-wire hook-up to KEYBUS
- Compatible with PC1864, PC1832 and PC1616 control panels

Approval Listings: FCC/IC





PC4020 MAXSYS Control Panel

- 16 on-board zones
- Expandable up to 128 zones using hardwire, wireless modules and addressable zones
- Supports up to 16 hardwired keypads
- 8 partitions
- Expandable to 64 wireless zones
- 1,500 user codes (4 or 6 digit)
- 3,000 event buffer
- 9 account and 3 phone numbers
- Built-in telephone line and siren supervision
- Auto SIA and Contact ID formats
- Supports GSM and T-Link™ alarm communicators
- Full upload/download support with DLS software

Approval Listings: FCC/IC, UL/ULC, CSFM



LCD4501 MAXSYS Programmable-Message LCD Keypad

- Connect up to 16 keypads
- Large, backlit, 2-line, 32-character display
- Plain-language display of zone status, system status, trouble conditions, event buffer, system instructions, date and time
- Ready, Armed and Trouble LEDs
- 5 programmable function keys
- 4 keypad-activated alarms: Panic, Auxiliary, Fire and Duress
- Backlight boost

Approval Listings: FCC/IC, UL/ULC, CSFM



PC4108A & PC4116 MAXSYS 8/16 Hardwire Zone Expanders

- PC4108A adds 8 hardwire zones
- PC4116 adds 16 hardwire zones
- AUX power rated at 250 mA (PTC protected)

Approval Listings: FCC/IC, UL/ULC, CSFM



RF4164-433 MAXSYS Wireless Receiver

- Supports 64 wireless zones, 16 wireless keys
- Up to 8 receivers on one system
- All wireless detectors are fully supervised for communication Integrity

Approval Listings: FCC/IC, UL/ULC

PC4204/PC4204CX MAXSYS Power Supply/Relay Output/Combus Repeater Module

- Connect up to 16 modules
- 4 programmable form 'C' relays
- Fully supervised for AC failure, low battery and AUX failure

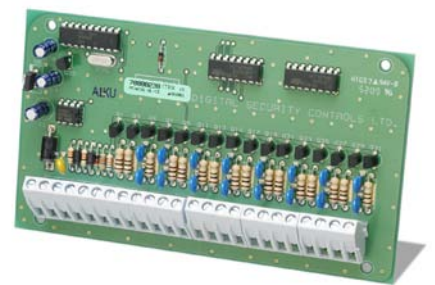
Approval Listings: FCC/IC, UL/ULC



PC4216 MAXSYS 16 Low Current Output Module

- Provides 16 programmable outputs: rated at 50 mA @ 12 VDC
- Connect up to 9 PC4216 modules per system

Approval Listings: FCC/IC, UL/ULC, CSFM



PC4401 MAXSYS Data Interface Module

- Connect up to 4 modules
- Capable of performing as either a bi-directional RS-232 interface, PC-Link isolator, printer module or DVACS® communicator (Canada only)
- Real-time zone status
- Fully programmable
- 4-wire hook-up to COMBUS

* DVACS is a registered trademark of Electro Arts Ltd. Scarborough Ontario, Canada.

Approval Listings: FCC/IC, UL/ULC, CSFM



ESCORT4580 MAXSYS Telephone Interface and Automation Control Module

- Turns any touch-tone phone into a talking keypad
- Built-in X-10 interface: supports up to 32 X-10 devices, 16 schedules, 8 modes
- Available in English, Spanish and French
- Programmable labels: 6 words per label, 240+ word library

Approval Listings: FCC/IC, UL/ULC





PC4632 & PC4664 MAXSYS 32/64 Point Graphic Annunciators

- Egg-crate backplate for flexible LED locations
- Pre-printed point display transparency
- Clear transparencies (2) for custom graphics

Approval Listings: FCC/IC, UL, CFSM



PC4820 MAXSYS 2-Reader Access Control Module

- Connect up to 16 modules
- Multiple reader technologies
- 2 supervised lock outputs: 250 mA per output
- 2 access door support per module for up to total of 32 on system
- 99 date schedules
- 4 holiday groups
- Arm/Disarm partitions via access control
- PC4053 beige cabinet included
- 64 user access levels

Approval Listings: FCC/IC, UL/ULC



MaxKit MAXSYS Access Control Kit

This affordable package is the perfect access control starter kit. It has all the essentials you need: control panel, access control module, reader and keys in one low-cost package. If needed, the system can be easily expanded.

Includes:

- 1 PC4020 control panel
- 1 PC4820 2-reader access control module
- 1 P225W26 ioProx reader
- 10 P40KEY ioProx dual-encoded proximity keys

Accessories for the MAXSYS Access Control Kit

T-REX Request-To-Exit Detector

- MAXSYS supports passive infrared request-to-exit detector with patented X-Y targeting™ and DSP (Digital Signal Processing)
- To order or request more information on Kantech products, please visit www.kantech.com

Approval Listings: FCC/IC, UL



KANTECH

A Tyco International Company

Readers

- MAXSYS supports a wide range of 26-bit Weigand readers: Polaris™, ioProx™, Shadowprox™, HID and Kantech XSF Technologies
- To order or request more information on Kantech products, please visit www.kantech.com

Approval Listings: FCC/IC



KANTECH

A Tyco International Company

sensors & accessories



▲ [return to contents](#)

Wireless

WT4989 2-Way Wireless Key

- Backlit ICON display
- Built-in buzzer for audible feedback
- Key tactile feedback
- 4 one touch function keys, programmable for up to 6 functions
- Status button indication
- Wireless key keylock
- Active alarm indication
- Water resistant
- Multifunction clip
- Nominal Battery life - 3 years
- Compatible with ALEXOR and IMPASSA

Approval Listings: FCC/IC, UL/ULC, SIA CP-01



WS4938 1-Button Personal Panic

- Activation via 1 large, easy-to-use button
- Integrated LED to indicate signal transmission
- Neck strap and multifunction belt clip included
- Reliable 433 MHz technology
- Water resistant
- Full 2-second delay on panic button
- Long-life lithium batteries included
- Supervised

Approval Listings: FCC/IC, UL/ULC



WS4949 2-Button Wireless Key

- 2-button, 3-function wireless key
- Activation via 2 large, scratch-resistant buttons
- Full 3-second delay on panic function
- Integrated LED to indicate signal transmission
- Reliable 433 MHz technology
- Long-life lithium batteries included
- Water resistant

Approval Listings: FCC/IC



WS4939 4-Button Wireless Key

- Durable, scratch-resistant buttons
- 4 programmable function keys
- Long-life lithium batteries included
- Full 3-second delay on panic alarm to reduce false alarms
- Multifunction belt clip included
- Reliable 433 MHz technology
- Optional generic rubber insert included
- Water resistant

Approval Listings: FCC/IC, UL/ULC, SIA CP-01





WS4969 4-Button Wireless With Built-In Flashlight

- Built-in, high-intensity LED flashlight
- Durable, scratch-resistant buttons
- 4 programmable function keys
- Long-life lithium batteries included
- Full 3-second delay on emergency alarm to reduce false alarms
- Reliable 433 MHz technology
- Water resistant

Approval Listings: FCC/IC



WS4959 5-Button Wireless Key

- 12 programmable function keys
- Integrated tri-color LED to indicate signal transmission and security modes
- 4 durable, scratch-resistant buttons and center toggle button
- Multifunction belt clip included
- Reliable 433 MHz technology
- Full 3-second delay on panic function
- Long-life lithium batteries included
- Water resistant

Approval Listings: FCC/IC



WS4979 4-Button Wireless Wall Plate

WS4979 features a slim, attractive design that fits nicely on homeowners' inside walls or other accessible locations. The WS4979 has all of the same functions as the WS4939 4-button wireless key and can be mounted or installed easily, at minimal cost.

- Durable, easy to operate buttons
- 4 programmable function keys
- Powered by long-life lithium batteries (included)
- Full three-second delay on panic alarm to reduce false alarms
- Reliable 433 MHz technology
- Additional functions: open garage doors turn on lights, open powered gates, etc.
- Programmable Disarm function
- Lightweight
- Slim, attractive design

Approval Listings: FCC/IC



WS4945* Wireless Door/Window Contact

- Built-in reed switch
- Normally closed external contact input
- 1 lithium battery included
- Available in brown housing
- Case and wall tamper

* WS4945N normally open version available

Approval Listings: FCC/IC, UL/ULC

EV-DW4975 Vanishing Contact

- Built-in reed switch
- Wafer-thin profile
- Long-life lithium battery included
- 5/8" (16 mm) magnet gap
- Reliable 433 MHz technology
- Includes double-sided tape

Approval Listings: FCC/IC



EV-DW4917 Wireless Recessed Door Transmitter

- Small, compact design
- Long-life lithium battery included
- Flexible mounting options (screw mount or press fit)
- Reliable 433 MHz technology
- Powerful, rare earth magnet
- Ships complete with flanged/non-flanged, brown/white access caps

Approval Listings: FCC/IC



WS4965 Tri-Zone Wireless Door/Window Contact

- 3 zones in 1 (each zone has an individual serial number)
- 1 reed/magnet combination zone
- Tilt switch mode for overhead doors
- 2 normally closed external contact inputs
- Long-life lithium battery included
- 1/2" (13 mm) maximum magnet gap
- Low-battery LED indicator
- Case tamper
- Reliable 433 MHz technology
- Includes backplate

Approval Listings: FCC/IC, UL/ULC



WS4904P Wireless Pet-Immune Passive Infrared Detector

- WS4904P replaces the WLS904PL-433
- Based on the Bravo® 3D hardwire motion detector
- High-traffic shutdown
- WS4904P features pet immunity up to 60 lbs (27 kg)
- 1 lithium battery included

Approval Listings: FCC/IC, UL/ULC





WLS914-433 Wireless Pet-Immune Passive Infrared Detector

- Based on the Bravo® 6 hardware motion detector
- High-traffic shutdown
- Pet immunity up to 85 lbs (39 kg)
- 4 'AA' batteries included

Approval Listings: FCC/IC, UL/ULC



WS4913 Wireless CO Detector

Colorless, tasteless, odorless but deadly, carbon monoxide (CO) is impossible to detect without a warning device. The WS4913 Wireless Carbon Monoxide Detector from DSC is the perfect complement to DSC's ALEXOR and the 2-Way Wireless Security Suite. The WS4913 provides frontline protection against the silent threat of carbon monoxide poisoning.

- Slim-line design
- Built-in 85dB alarm at 10 ft. (3 m)
- Malfunction supervision
- Low sensitivity supervision
- Electrochemical sensing technology
- Transmits RF status, low battery and tamper condition
- Hush feature
- Wall tamper
- Onboard LEDs indicate:
 - * Red – Alarm
 - * Yellow – Trouble
 - * Green – Power
 - * Amber – Warm Up
- 4-5 year battery life
- End-of-Life (EOL) indicator (5 year)
- Low battery supervision
- Compatible with ALEXOR

Approval Listings: FCC/IC, UL/ULC

Coming Soon

- Compatible with PowerSeries 4.5 and higher



WS4916 Wireless Photoelectric Smoke Detector with Heat

- Automatic drift compensation
- Built-in, dual-sensor heat detector with fixed heat and rate of rise (non UL listed)
- Built-in 85dB horn
- Local test button
- Low profile design
- High/Low sensitivity reporting
- Low battery indication
- Easy-maintenance removable smoke chamber
- Non-contact sensitivity reading with handheld test meter (FSD-100)
- Long-life lithium batteries included
- UL/ULC/EN listed for residential applications

Approval Listings: FCC/IC, UL/ULC, CSFM



WP-433 Wireless Device Programmer

- Supports all DSC door/window contacts, PIRs, glassbreak detectors and wireless keys
- Simplifies enrolling and programming of wireless devices

Approval Listings: FCC/IC

WS4926 Wireless Photoelectric Smoke Detector

- Automatic drift compensation
- Built-in 85dB horn
- Local test button
- Low profile design
- High/Low sensitivity reporting
- Easy-maintenance removable smoke chamber
- Non-contact sensitivity reading with handheld test meter (FSD-100)
- Long-life lithium batteries included
- UL/ULC listed for residential applications
- Low battery indication

Approval Listings: FCC/IC, UL/ULC, CSFM



WT4901 2-Way Wireless Indoor Siren

- Siren Output – 85dB
- Siren sounds for alarms, door chimes, entry/exit delay and troubles
- Transmits RF status, low battery and tamper condition
- Front and back tamper detection
- Nominal battery life - 1 year
- Compatible with ALEXOR and IMPASSA
- Onboard test button

Approval Listings: FCC/IC, UL/ULC, SIA CP-01, CSFM



WT4911 2-Way Wireless Outdoor Siren

- Siren Output – 100dB
- Siren sounds for alarms and squawks
- Strobe light functionality for visual indication
- Provides temperature to WT5500 Wire-free keypad
- Transmits RF status, low battery and tamper condition
- Large print area for company logo
- Front and back tamper detection
- IP34 rating
- Nominal battery life – 2-3 years
- Compatible with ALEXOR and IMPASSA
- Remote test capability

Approval Listings: FCC/IC, UL/ULC, SIA CP-01



WS4985 Wireless Flood Detector

The wireless flood detector is based on the WS4945 wireless door/window contact that is connected to a water probe through a 6 foot-wire. The product is enrolled as a flood zone detector with the following DSC control panels: ALEXOR, PowerSeries 9047, PC1616, PC1832, PC1864, PC4020, and is fully supervised.

- Built-in reed switch
- Normally closed external contact input
- 1 lithium battery included
- Case and wall tamper
- End-of-line resistor
- 4 year battery life

Approval Listings: FCC/IC





Coming Soon

WS4920 Wireless Repeater

- Greatly extends the range of DSC 1-way wireless devices
- Backward compatible with existing security systems including ALEXOR, PowerSeries 9047, PowerSeries and MAXSYS
- WS4920 identifies the optimal location for mounting taking in to consideration noise and interference
- Quick enrolment of DSC 1-way wireless devices
- Status LEDs for AC, battery and RF Jam
- Up to four repeaters can be installed for each panel/receiver
- WS4920 supports up to 164 wireless devices
- Wall and case tamper protection
- Aesthetically pleasing design

Approval Listings: FCC/IC, UL/ULC



WLS912L-433 Wireless Glassbreak Detector

- Based on the Acuity® glassbreak detector
- 2 lithium batteries included
- Tamper-activated test mode: should be tested using the AFT-100 glassbreak simulator

Approval Listings: FCC/IC, UL/ULC



EV-DW4927 Wireless Shock Sensor With Built-In Door/Window Contact

- Electro mechanical shock sensor
- Adjustable sensitivity
- Pre-alert
- Built-in reed contact
- User-replaceable lithium battery

Approval Listings: FCC/IC



RXL2-433 2-Channel Wireless Receiver

- 2 on-board form 'C' relay outputs
- Supports up to 10 wireless buttons per output
- 4 programmable relay options (Momentary, Timed, Latched and Continuous)
- Independent of security system type
- No serial number to program
- 120 VAC plug-in transformer included
- Reliable 433 MHz technology
- Compatible with WS4949, WS4939, WS4959 and WS4969 wireless keys

Approval Listings: FCC/IC

Addressable

AMB-300 Addressable Passive Infrared Detector

- Patented MLSP (Multi-Level Signal Processing)
- Interchangeable lenses: wall-to-wall lens (standard), curtain lens, pet-immune lens and corridor lens
- Built-in tamper switch
- Based on the Bravo®3 hardwire motion detector

Approval Listings: FCC/IC, UL/ULC



AMB-600 Addressable Pet-Immune Passive Infrared Detector

- Based on the Bravo®6 hardwire motion detector
- Patented MLSP (Multi-Level Signal Processing)
- Provides pet immunity up to 85 lbs (39 kg)
- Built-in tamper switch

Approval Listings: FCC/IC, UL/ULC



AMB-500 Addressable Ceiling-Mount Passive Infrared Detector

- Based on the Bravo®5 hardwire motion detector
- Built-in tamper switch
- Coverage diameter based on mounting height

Approval Listings: FCC/IC, UL/ULC



AMA-100 Addressable Glassbreak Detector

- Based on the Acuity® hardwire glassbreak detector
- Detects all types of breaking glass: plate, laminated, safety and tempered
- Can be tested using the glassbreak simulator (AFT-100)
- Built-in tamper switch

Approval Listings: FCC/IC, UL/ULC





FSB-210 Series Addressable Photoelectric Smoke Detectors
FSB-210B (Without Heat Sensor)
FSB-210BT (With Heat Sensor) – Fixed heat with rate of rise
(rate of rise feature not UL listed)

- Automatic drift compensation
- Easy-maintenance removable smoke chamber
- Non-contact sensitivity reading with handheld test meter (FSD-100)
- Self diagnostics

Approval Listings: FCC/IC, UL, CSFM



AML-770B Loop Isolator Module

- Can be used to isolate burglary detectors from fire detectors on the same wire run

Approval Listings: FCC/IC, UL/ULC



AMX-400 Loop Repeater/Isolator Module

- Can be used to repeat and re-power the AML loop to allow for longer wire runs
- Requires 12 VDC power source
- Will isolate the wire run in the event of a problem
- Provides additional 170 mA

Approval Listings: FCC/IC, UL/ULC



Addressable Contact Modules

Model	Description
AMP-700	Door/Window contact with built-in reed switch
AMP-701	Door/Window contact with normally closed external contact input
AMP-702	Fire point module with normally open, EOL resistor supervised external contact input
AMP-704	4-zone door/window contact with normally closed, single or double EOL inputs

Approval Listings: FCC/IC, UL/ULC

Motion Detectors

Bravo® 5 360° Ceiling-Mount PIR Motion Detectors

- Temperature compensation for improved catch performance at critical temperatures
- Patented Multi-Level Signal Processing (MLSP) for accurate detection of human IR energy over a broad range of temperatures
- Sensitivity adjustment to configure the detector for normal or hostile environments
- High-level static and transient protection
- Exceptional white light immunity
- Excellent RF immunity
- Digital signal analysis for consistent detection throughout the coverage pattern

Approval Listings: FCC/IC, UL/ULC

PIR only

Model	Description
BV-500	Form 'A' alarm contact
BV-501	Form 'A' alarm contact & tamper switch
BV-502	Form 'C' alarm contact & tamper switch

PIR and Glassbreak

Model	Description
BV-500GB	Form 'A' alarm contact (motion), form 'C' alarm contact (glassbreak)
BV-501GB	Form 'A' alarm contact (motion), form 'C' alarm contact (glassbreak) & tamper switch
BV-502GB	Form 'C' alarm contact (motion), form 'C' alarm contact (glassbreak) & tamper switch



Bravo® 6 Twin, Dual-Element, Pet-Immune PIR Motion Detectors

- Digital signal analysis for consistent detection throughout the coverage pattern
- Digital temperature compensation for improved catch performance at critical temperatures
- Patented Multi-Level Signal Processing (MLSP) for accurate detection of human IR energy over a broad range of temperatures
- 85 lbs (39 kg) pet immunity

Approval Listings: FCC/IC, UL/ULC

Optional mounting brackets available: DM-W (wall-mount bracket) or DM-C (ceiling-mount bracket)

Model	Description
BV-600	Form 'A' alarm contact
BV-601	Form 'A' alarm contact & tamper switch
BV-602	Form 'C' alarm contact & tamper switch





LC-100-PI & LC-120-PI PIR Detector with Pet Immunity

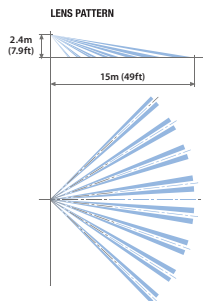
The LC-100-PI (Form A contact) and LC-120-PI (Form C contact) detectors feature intelligent signal analysis for reliable detection, pet immunity up to 55 lbs (25 kg) and a slim design that complements any décor.

- Form “A” or “C” alarm contact and tamper switch
- Digital signal analysis
- Pet immunity up to 55 lbs (25 kg)
- Quad Linear Imaging Technology for sharp analysis of body dimensions and differentiation from backgrounds and pets
- Advanced ASIC-based electronics
- Compact design for residential installations
- Adjustable variable pulse count
- PIR sensitivity adjustment
- Height installation calibration free
- Available in packages of 6 (LC-100-PI-6PK)
- LC-L1ST bracket available separately

Approval Listings: FCC/IC, UL/ULC

Model	Description
LC-100-PI-6PK	Form ‘A’ alarm contact & tamper switch
LC-120-PI	Form ‘C’ alarm contact & tamper switch

Coverage Pattern



LC-L1ST bracket



Ceiling mounting



Wall mounting

LC-103-PIMSK, LC-123-PIMSK, LC-104-PIMW & LC-124-PIMW PIR Detector with Pet Immunity

The LC-103-PIMSK, LC-123-PIMSK, LC-104-PIMW and LC-124-PIMW are dual-technology motion detectors that combine passive infrared and microwave detection with pet immunity. LC-103-PIMSK and LC-123-PIMSK also support anti-masking. The anti-masking feature prevents intruders from defeating the detector by covering its field of view.

- Anti-masking (LC-103-PIMSK/LC-123-PIMSK)
- Form "A" or "C" alarm contact and tamper switch
- Digital signal analysis
- Pet immunity up to 55 lbs (25 kg)
- Quad Linear Imaging Technology for sharp analysis of body dimensions and differentiation from backgrounds and pets
- Microwave detection based on Doppler concept
- Unique microwave motion sensor module with micro-strip patch antenna
- Advanced ASIC-based electronics Height installation calibration free 2-way PIR/microwave sensitivity adjustment
- User-friendly installation with or without swivel-mount bracket available separately: LC-L1ST

Approval Listings: FCC/IC, UL/ULC

Model	Description
LC-103-PIMSK-W	Form 'A' 10.525 GHz alarm contact & tamper switch
LC-104-PIMW-W	Form 'A' 10.525 GHz alarm contact & tamper switch
LC-123-PIMSK-W	Form 'C' 10.525 GHz alarm contact & tamper switch
LC-124-PIMW-W	Form 'C' 10.525 GHz alarm contact & tamper switch

LC-L1ST bracket



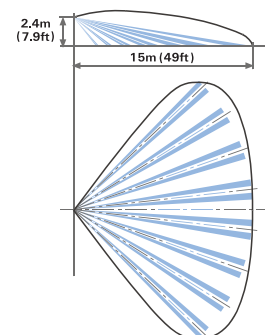
Ceiling mounting



Wall mounting



Coverage Pattern





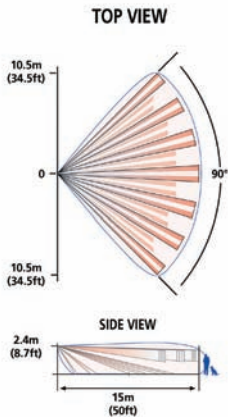
LC-151 Dual-Tech Outdoor Motion Sensor
(Single PIR & Microwave) with adjustable Pet Immunity

The LC-151 is a unique motion detector utilizing a single passive infra-red element and Microwave technology and is designed for outdoor use in the most severe climatic conditions. The LC-151 can also accommodate pets with the addition of optional pet immunity lenses. High reliability is achieved by combining both dual tech hardware with highly sophisticated software, greatly reducing the possibility of false alarms.

- Frequency: 10.525 GHz
- Microwave detection based on Doppler concept
- N.O. & N.C. relays switched at the same time
- Installation height is calibration free from 6 ft. to 8 ft. (1.8 m to 2.4 m)
- Pet Immune up to 33 lbs (15 kg) without pet immunity lens or up to 80lb (36kg) when using supplied LC-F1-15X pet immunity lens
- PIR sensitivity adjustment
- MW intensity selection
- Temperature compensation
- Microcontroller signal processing
- Front and back tamper protection
- Unique waterproof and seal plastic design
- Detection range: up to 49 ft. (15 m)
- Detects human intruders walking or running
- No maintenance required
- High RFI/EMI immunity
- Protection from: direct sunlight, wind up to 30m/sec, snow and rain, small animals, removal of top cover and removal from mounting bracket
- Rain and dust proof: IP65
- LC-B1-15X wall mount bracket available separately

Approval Listings: FCC/IC

Coverage Pattern



Model	Description
LC-151	Form 'C' alarm contact and tamper switches

Wall mount bracket



LC-B1-15X
Wall mount bracket

LC-171 Dual-Tech Outdoor Motion Sensor (Double PIR & Microwave) with Pet Immunity

The LC-171 is a unique motion detector utilizing dual passive infra-red elements and Microwave technology and is designed for outdoor use in the most severe climatic conditions. The LC-171 can also accommodate pets.

High reliability is achieved by combining both dual tech hardware with highly sophisticated software and an adaptive coverage area, greatly reducing the possibility of false alarms. The active elements are comprised of a dual element PIR and advanced Microwave detector inside a stylish, rigid plastic body.

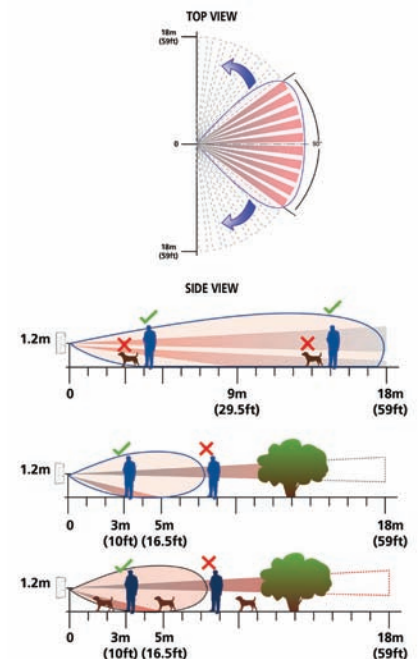
- Frequency: 24.125 GHz
- Microwave detection based on Doppler concept
- N.O. & N.C. Relays switched at the same time
- Pet immunity up to 77 lbs (35 kg)
- 16 levels of PIR sensitivity adjustment and 3 microwave sensitivity groups
- Temperature compensation
- Microcontroller signal processing
- Front and back tamper protection
- Audible indication of walk test and intruder detection
- Unique waterproof sealed plastic design
- Detection range: up to 59 ft. (18 m)
- Detect human intruders walking or running
- No maintenance required
- High RFI/EMI immunity
- Protection from: direct sunlight, wind up to 30 m/sec, snow and rain, small animals, removal of the top cover and removal from mounting bracket
- Rain and dust proof: IP65

Approval Listings: FCC/IC

Model	Description
LC-171	Form 'C' alarm contact and tamper switches



Coverage Pattern



Glassbreak Detectors



Acuity® Glassbreak Detectors

- Microphone
- Advanced microprocessor-based glassbreak sensor
- High-level static and transient protection
- High RF immunity with SMD construction
- White noise rejection mechanism
- Installer test mode for glassbreak sensor (AFT-100 tester required)
- Alarm memory (latching LED) for glassbreak sensor
- MOV transient/static protection
- Jumper selectable sensitivity range

Approval Listings: FCC/IC, UL/ULC

Wall-Mount

Model	Description
AC-100	Form 'A' alarm contact
AC-101	Form 'A' alarm contact & tamper switch
AC-102	Form 'C' alarm contact & tamper switch



Ceiling Mount

Model	Description
AC-500	Form 'A' alarm contact



DG-50AU/BU Glassbreak Detector

- Clean, modern design blends with any décor
- Advanced signal discrimination for accurate identification of breaking glass
- Resistant to blinding by background noises
- Sensitivity adjustment potentiometer
- Anti-shock design prevents false alarms from mechanical shock
- MOV static/lighting protection
- SMD construction and integral ground shield for high RF immunity

Approval Listings: FCC/IC, ULC

Accessories:

AFT-100 Glassbreak Simulator

The AFT-100 glassbreak simulator provides the most reliable and accurate indication of the correct mounting location for the detector. Do not install the detector beyond the maximum recommended range, even if the glassbreak simulator reports additional range. Future changes in room acoustics could reduce any additional range.



SS-102 Shock Sensor

- Unique bi-colored LED to indicate minor or major attacks
- Anti-tamper protection
- Moisture-resistant electronics module
- Sensitivity adjustment
- High immunity to low-frequency false alarms and radio interference
- Compatible with all makes of control panels
- SS -102 is able to monitor for minor vibrations (and count them to a preset limit) and for major attacks at the same time



Approval Listings: FCC/IC

Smoke Detectors

FSA-210/410 Wired Photoelectric Smoke Detectors

- Automatic drift compensation
- Built-in, dual-sensor heat detector (option)
- Built-in 85dB horn (option)
- Easy-maintenance removable smoke chamber
- Interconnectable using PRM-2W/4W polarity reversal modules
- Non-contact sensitivity reading with handheld test meter (FSD-100)
- Low profile design
- Local test button

Approval Listings: FCC/IC, UL/ULC, MEA, CSFM

FSA-210

Model	Description
FSA-210(x)*	2-wire photoelectric smoke detector
FSA-210(x)T*	2-wire photoelectric smoke detector w/ heat detector
FSA-210(x)ST*	2-wire photoelectric smoke detector w/ integral sounder & heat detector
FSA-210(x)RT*	2-wire photoelectric smoke detector w/ aux. relay & heat detector

FSA-410

Model	Description
FSA-410(x)*	4-wire photoelectric smoke detector
FSA-410(x)T*	4-wire photoelectric smoke detector w/ heat detector
FSA-410(x)RT*	4-wire photoelectric smoke detector w/ aux. relay & heat detector
FSA-410(x)S*	4-wire photoelectric smoke detector w/ integral sounder
FSA-410(x)ST*	4-wire photoelectric smoke detector w/ integral sounder & heat detector
FSA-410(x)RST*	4-wire photoelectric smoke detector w/ integral sounder, aux. relay & heat detector

*Legend (x) = 'A' Canadian model number (ULC listed) | (x) = 'B' U.S. model number (UL listed)



FSD-100 Handheld Test Meter

Precise and quick sensitivity testing is easily accomplished with the non-contact FSD-100 handheld test meter. Powered by a standard 9V alkaline battery and small enough to fit inside a shirt pocket, the FSD-100 holds 500 readings that can be downloaded to any computer. To initiate a reading, a technician simply holds the FSD-100 near a DSC smoke detector and activates the detector's test button.

Approval Listings: FCC/IC, UL/ULC



Accessories:

PRM-2W

Polarity reversal module, PCB for panel mounting (2-wire interconnect)

PRM-2WC

Polarity reversal module in plastic case (2-wire interconnect)

PRM-4W

Polarity reversal module, PCB for panel mounting (4-wire interconnect)

PRM-4WC

Polarity reversal module in plastic case (4-wire interconnect)

RM-2

End-of-line power supervisory relay (4-wire detectors only)

Approval Listings:

PRM-2W, PRM-2WC, PRM-4W, PRM-4WC:

FCC/IC, UL/ULC, CSFM

PRM-2: UL/ULC, CSFM

communications



[return to contents](#)

Transmitters

GS2065 GPRS Cellular Alarm Communicator

- Compatible with ALEXOR Wireless Panel
- Back up and primary GPRS alarm communication
- Panel remote uploading/downloading support via GPRS
- Supervision heartbeats via GPRS
- 128-bit AES encryption via GPRS
- SIA protocol
- SIM Card (included)
- PC-Link connection
- Signal strength and trouble display
- Remote activating and programming through Connect 24
- Full event reporting
- Quad-Band: 850 MHz, 1900 MHz, 900 MHz and 1800 MHz
- Compatible with Sur-Gard System I/II/III monitoring station receivers
- UL standard & encrypted line security
- Antenna Extension Kits available: ANT-15Q, ANT-25Q, ANT-50Q
- Contact ID protocol (with ALEXOR firmware version 1.1 and communicator firmware version 1.1 or higher)
- Command and Control via SMS

Approval Listings: FCC/IC, PTCRB, UL/ULC, NIST (AES Encryption Validation), CSFM, AT&T/Rogers



TL265GS Internet and GPRS Dual-path Alarm Communicator

- Compatible with ALEXOR Wireless Panel
- Fully redundant Internet and GPRS dual-path alarm communication
- Integrated call routing
- Panel remote uploading/downloading support via GPRS and Internet
- Supervision heartbeats via GPRS and Internet
- 128-bit AES encryption via GPRS and Internet
- Full event reporting
- SIA protocol
- SIM Card (included)
- PC-Link connection
- Signal strength and trouble display
- Remote activating and programming through Connect 24
- Quad-Band: 850 MHz, 1900 MHz, 900 MHz and 1800 MHz
- Compatible with Sur-Gard System I/II/III monitoring station receivers
- UL standard & encrypted line security
- Active GS account is required to use IP function
- Antenna Extension Kits available: ANT-15Q, ANT-25Q, ANT-50Q
- Contact ID protocol (with ALEXOR firmware version 1.1 and communicator firmware version 1.1 or higher)
- Command and Control via SMS

Approval Listings: FCC/IC, PTCRB, UL/ULC, NIST (AES Encryption Validation), CSFM, AT&T/Rogers



GS2060 GPRS Cellular Alarm Communicator

- Compatible with PC1864/1832/1616 control panels (version 4.1 and higher)
- Back up and primary GPRS alarm communication
- Panel remote uploading/downloading support via GPRS
- Supervision heartbeats via GPRS
- 128-bit AES encryption via GPRS
- Full event reporting
- SIA protocol
- SIM Card (included)
- Remote activating and programming through Connect 24
- Quad-Band: 850 MHz, 1900 MHz, 900 MHz and 1800 MHz
- Compatible with Sur-Gard System I/II/III monitoring station receivers
- UL standard & encrypted line security
- ULC passive or active line security levels
- Antenna Extension Kits available: ANT-15Q, ANT-25Q, ANT-50Q
- Signal strength and trouble display
- Contact ID protocol (with PowerSeries firmware version 4.5 and communicator firmware version 1.1 or higher)
- PC-Link connection

Approval Listings: FCC/IC, PTCRB, UL/ULC, NIST (AES Encryption Validation), CSFM, AT&T/Rogers





TL260GS Internet and GPRS Dual-path Alarm Communicator

- Compatible with PC1864/1832/1616 control panels (version 4.1 and higher)
- Fully redundant Internet and GPRS dual-path alarm communication
- Integrated call routing
- Panel remote uploading/downloading support via GPRS and Internet
- Supervision heartbeats via GPRS and Internet
- 128-bit AES encryption via GPRS and Internet
- Full event reporting
- SIA protocol
- SIM Card (included)
- Remote activating and programming through Connect 24
- Quad-Band: 850 MHz, 1900 MHz, 900 MHz and 1800 MHz
- Compatible with Sur-Gard System I/II/III monitoring station receivers
- UL standard & encrypted line security
- ULC passive or active line security levels
- Active GS account is required to use IP function
- Antenna Extension Kits available: ANT-15Q, ANT-25Q, ANT-50Q
- Signal strength and trouble display
- Contact ID protocol (with PowerSeries firmware version 4.5 and communicator version 1.1 or higher)
- PC-Link connection

Approval Listings: FCC/IC, PTCRB, UL/ULC, NIST (AES Encryption Validation), CSFM, AT&T/Rogers



TL300CF Kit

- Commercial fire Ethernet IP communicator
- Works with any control panel that communicates using contact ID format
- Configured for standalone commercial fire applications
- Compliant with NFPA72 Editions: 2002, 2007, 2010
- Power supply included
- Compatible with most control panels that use the Contact ID format
- 128-bit AES encryption (NIST approved)
- Supports DHCP (dynamic IP addresses)
- Low network bandwidth requirements
- Reports events to 2 different receiver IP addresses
- UL standard & encrypted line security
- 4 on-board programmable zone inputs and 2 programmable voltage outputs as stand-alone module
- Programmable through the PK5500 LCD keypad or T-Link Console software
- Software upgrades via network
- Compatible with Sur-Gard System I/II/III monitoring station receivers
- ULC Passive or active security levels
- ULC active line security levels A₁-A₄
- Polling and hardware substitution protection

Approval Listings: FCC/IC, UL/ULC, CSFM

GS3055-ICF GPRS Universal Cellular Commercial Fire Alarm Communicator *(Only available in the U.S.A.)*

- Compatible with control panels that communicate using the Contact ID format
- Compatible with Sur-Gard System I/II/III monitoring station receivers
- Uses GPRS data channel for high-speed, reliable and low-cost communications to an IP receiver
- 4 on-board inputs
- Activation and initialization via automated telephone activation system (VRU) or web-user interface provided by CONNECT 24
- CSFM Approved
- Includes UL listed power supply, transformer and 7 Ah rechargeable battery
- UL 864 9th Edition
- Can be used as sole or multiple path communicator
- 97S supervisory heartbeat
- 300S supervision windows
- Antenna Extension Kits available: ANT-15, ANT-25, ANT-50
- 4 on-board outputs (open collector)
- SIM card (included)
- Full event reporting
- Compliant with NFPA72 Editions: 2002, 2007, 2010

Approval Listings: FCC, UL (Commercial Fire/BURG), PTCRB, AT&T/Rogers, CSFM



GS3060 GPRS Universal Cellular Alarm Communicator

- Compatible with control panels that communicate using the Contact ID format
- Uses GPRS data channel for high-speed, reliable and low-cost communications to Sur-Gard I/II/III receivers
- 4 on-board outputs (open collector)
- Activation and initialization via automated telephone activation system (VRU) or web-user interface provided by CONNECT 24
- 4 on-board inputs
- Full event reporting
- Monitors the panel's attempts to communicate to determine if GPRS backup communications are necessary
- ULC passive line security levels P1-P3 (use in conjunction with compatible ULC dialer)
- Antenna Extension Kits available: ANT-15, ANT-25, ANT-50
- SIM card (included)

Approval Listings: FCC/IC, UL/ULC, PTCRB, AT&T/Rogers



ADP1310-NA GS3055 and GS3060 Transformer

- Dimension: 4" (H) x 2.375" (W) x 2" (D)
- North America plug
- Inputs: 100- 240 VAC, 50/60Hz
- Outputs: 13.8 Vdc, 1 Amp

Approval Listings: UL/ULC Energy Efficiency Level IV approvals

Note: Not used for installations that require standby supply (battery backup)





TL150 T-Link Residential IP Alarm Communicator

- Compatible with PowerSeries control panel
- Supports all PowerSeries control panels
- Supervised as a KEYBUS module (supervision of both KEYBUS and network connections)
- T-Link programming (IP address and account number) through a web-browser interface
- Homeowners can arm/disarm security system and view zone status through a web page on their home computer
- Instant, always-on IP communication
- Compatible with Sur-Gard System I/II/III monitoring station receivers
- Low network bandwidth usage
- Compatible with 10/100BaseT networks
- 128-bit AES encryption
- Supports DHCP (dynamic IP addresses)
- Works over local LAN/WAN network or the Internet

Approval Listings: FCC/IC



TL250 T-Link Internet/Intranet Alarm Communicator

- Compatible with PowerSeries (version 3.24 and higher) and MAXSYS (version 3.31 and higher) control panels
- Works over local LAN/WAN network or the Internet
- 128-bit AES encryption (NIST approved)
- Supports DHCP (dynamic IP addresses)
- Low network bandwidth requirements
- Compatible with 10/100BaseT networks
- Reports events to 2 different receiver IP addresses
- Polling and hardware substitution protection
- Instant, always-on IP communication
- Software upgrades via network
- 4 on-board programmable inputs and 2 programmable voltage outputs as stand-alone module
- Programmable through the system keypad, PK5500 LCD keypad or T-Link Console software
- Download control panel via Internet with DLS software
- Compatible with Sur-Gard System I/II/III monitoring station receivers
- UL standard & encrypted line security
- ULC passive or active line security levels A₁-A₄

Approval Listings: FCC/IC, UL/ULC, CSFM, NIST (AES Encryption Validation)



TL250D T-Link DVACS* Internet/Intranet Alarm Communicator *(Canada Only)*

- Transparent to automation monitoring software
- Transmits DVACS generated events by converting the DVACS protocol to IP
- 90-second supervision (same as traditional DVACS)
- 128-bit AES encryption
- Compatible with 10/100BaseT networks
- Software upgrades via network
- Compatible with Sur-Gard System I/II/III monitoring station receivers
- ULC active line security levels A₁-A₄

*DVACS is a registered trademark of Electro Arts. Ltd Scarborough, Ontario T-Link DVACS * Internet/Intranet Alarm Communicator TL250D (Canada Only)

Approval Listings: FCC/IC, ULC, NIST (AES Encryption Validation)

TL260 T-Link Internet/Intranet Alarm Communicator

- Compatible with PC1864/PC1832/PC1616 control panels (version 4.1 and higher)
- Panel remote uploading & downloading via internet/intranet using DLS IV
- Programmable using DLS IV or keypad
- Supervision heartbeat via internet/intranet
- 128 Bit AES Encryption
- Contact ID protocol (with PowerSeries firmware version 4.5 and communicator firmware version 1.1 or higher)
- Full event format
- SIA protocol
- Contact ID Protocol (with PowerSeries version 4.5 and communicator firmware version 1.1 or higher)

Approval Listings: FCC/IC, UL/ULC, CSFM, NIST (AES Encryption Validation)



TL265 T-Link Internet/Intranet Alarm Communicator

- Compatible with ALEXOR
- Panel remote uploading & downloading via internet/intranet using DLS IV
- Programmable using DLS IV or keypad
- Supervision heartbeat via internet/intranet
- 128 Bit AES Encryption
- Contact ID format (with ALEXOR firmware version 1.1 and communicator firmware version 1.1)
- PC-Link connection
- UL Standard & encrypted line security
- ULC Passive or active security levels
- Supports DHCP or static IP addresses
- Full event format
- SIA format

Approval Listings: FCC/IC, UL/ULC, CSFM, NIST (AES Encryption Validation)



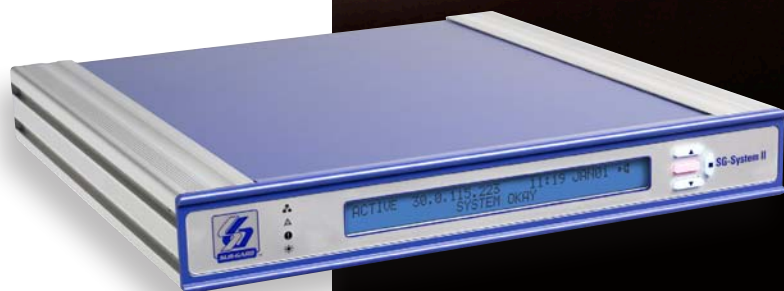
TL300 T-Link Universal IP Alarm Communicator

- Compatible with most control panels that use the Contact ID format
- Instant, always-on IP communication
- Works over local LAN/WAN network or the Internet
- 128-bit AES encryption (NIST approved)
- Supports DHCP (dynamic IP addresses)
- Low network bandwidth requirements
- Compatible with 10/100BaseT networks
- Reports events to 2 different receiver IP addresses
- UL standard & encrypted line security
- 4 on-board programmable zone inputs and 2 programmable voltage outputs as stand-alone module
- Programmable through the PK5500 LCD keypad or T-Link Console software
- Software upgrades via network
- Compatible with Sur-Gard System I/II/III monitoring station receivers
- ULC Passive or active security levels
- ULC active line security levels A₁-A₄
- 12-24 volt DC support (version 1.5 and higher)
- Polling and hardware substitution protection
- Compliant with NFPA72 Editions: 2002, 2007, 2010

Approval Listings: FCC/IC, UL/ULC, CSFM, NIST (AES Encryption Validation)



▲ [return to contents](#)



 **SUR-GARD**
A Tyco International Company

Monitoring Station Receivers & Line Card Modules

▲ [return to contents](#)



A Tyco International Company

SG-SYSTEM I/SG-SYSTEM I-IP

Dual Phone Line with Optional IP Receiver

- Multi-format receiver
- Integrated scheduled receiver line card testing
- Up to 63 different profiles and up to eight different handshakes per profile
- 500-event memory buffer on each individual line card
- Patented ANI and DNIS reception, Automatic Handshake Selection (AHS), Caller ID capability and virtual configurations
- Continuous verification of computer (automation) connection
- One parallel, one serial, one USB, one TCP/IP printer port available
- One serial, one TCP/IP automation port available
- One USB, one TCP/IP console port available
- Non-volatile RAM for programming and event buffer
- Optional support for 512 IP Communicators
- Rack mount in standard 19-inch rack with the SG-SII-RMK
- 128 Bit AES encryption over IP
- Menu-driven, 40-character, 2-line LCD display with blue backlighting provides instruction when in manual mode
- 4 buttons for manual programming and acknowledgement of alarm signals when in manual mode
- Universal power supply compatible with 110/220 50 Hz/60 Hz
- Onboard flash memory and DSP for future software upgrades and enhancements



Approval Listings: FCC/IC, UL/ULC, CSFM, NIST (AES Encryption Validation)

SG-SYSTEM II Single-Line IP Receiver

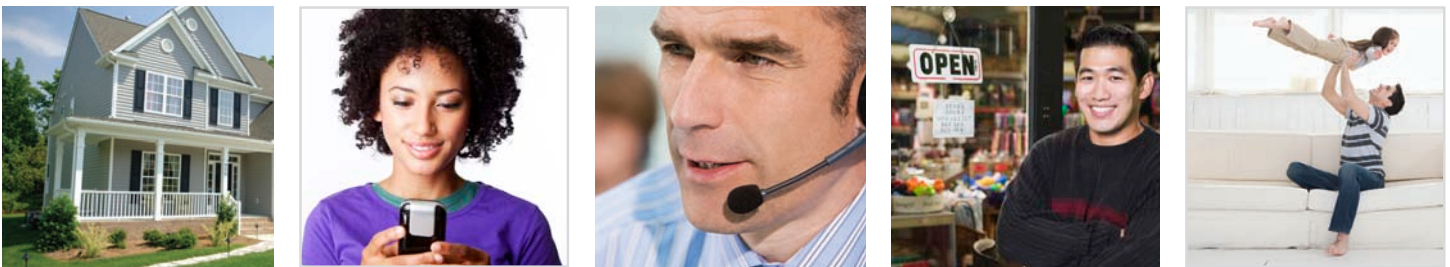
- Value-priced remote monitoring solution ideal for lower-volume applications
- Supports up to 512 supervised and up to 1,536 IP communicator accounts (TL150, TL250, TL300, TL260, TL265, TL260GS, TL265GS, GS3055-ICF, GS3060, GS2060, GS2065)
- Rack mount in standard 19-inch rack with the SG-SII-RMK
- TCP/IP, USB, serial outputs to automation software
- 128-bit AES encryption
- Works over local LAN/WAN network as well as the Internet
- Polling and hardware substitution protection
- Compatible with 10/100BaseT networks
- Fully programmable via SG-Systems Console software
- Menu-driven, 40-character, 2-line LCD display with blue backlighting provides instruction when in manual mode
- 4 buttons for manual programming and acknowledgement of alarm signals when in manual mode
- Universal power supply compatible with 110/220 50 Hz/60 Hz
- Onboard flash memory and DSP for future software upgrades and enhancements
- Additional 1,536 IP communicator accounts available with license key upgrade



Approval Listings: FCC/IC, UL/ULC, CSFM, NIST (AES Encryption Validation)

Established in 1998, the Connect 24 brand started as a service to activate and administer Skyroute cellular back up devices for security alarm dealers in the U.S. and Canada. In 2008, as service providers moved from an analogue service to a digital service, Connect 24 rapidly became the leading reseller of cellular primary and back up services for the security industry in North America.

As the demand grew and with the evolution of technology, in 2011, Connect 24 became the parent brand with the establishment of C24 Communications (formerly Connect 24) and C24 Interactive as sub-brands and services under the parent brand.



C24 interactive

C24 Interactive is the ideal dealer platform to extend current service capabilities, both within and beyond the existing customer base.

With C24 Interactive, you can offer new, innovative, easy to use security services that will protect your customers, build loyalty and brand recognition and ensure revenue growth in the ever-changing security technology market.

In addition, the modular approach to home automation means that C24 Interactive will provide upsell potential to your customers.

Stay Connected with your customers with C24 Interactive.

Features and benefits

- Simple and intuitive to use
- Interactive touch screen
- Remote web and mobile access
- Live video, event-triggered video clips and pictures
- Remote lighting and thermostat control
- E-mail and text message notifications

For more information on C24 Interactive, please contact us at info@connect24.com

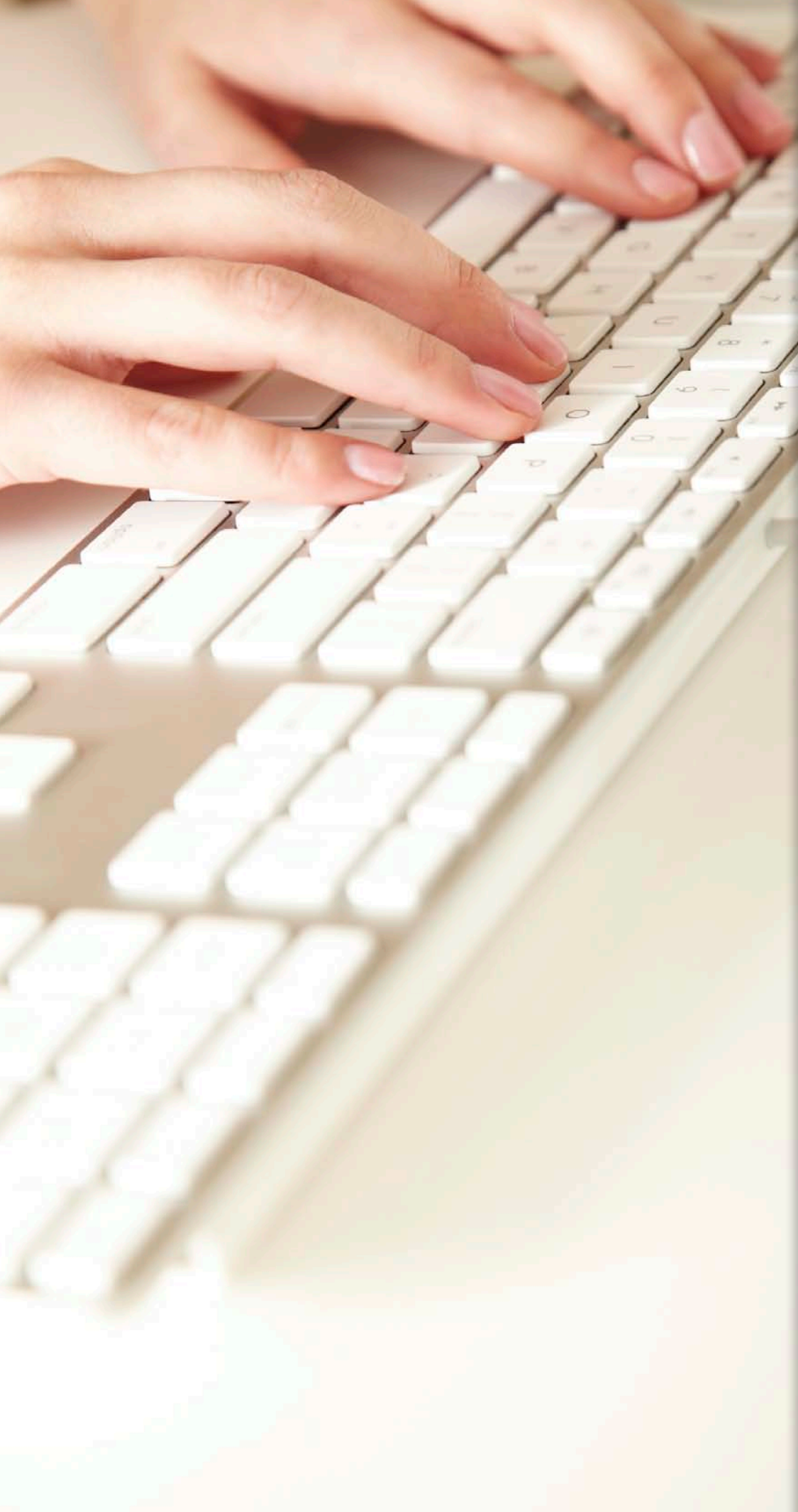
C24 communication

Since 1998, C24 Communications has been activating and administering mobile and GSM devices (DSC branded Alarm Communicators) for security alarm dealers in North America. The units are activated through a Voice response Unit (VRU) over a phone line or via C24 Communications' web portal.

These secure interfaces allow for the activation, editing and deactivation of accounts, the retrieval of device status and programming or modification of communicator options.

For more information on C24 Communication, please visit www.connect24.com





▲ [return to contents](#)

software solutions & services

DLS IV Downloading Software

DLS IV is built with tomorrow in mind. It runs on Microsoft's powerful .NET Framework 3.5 and SQL Server Express 2005 database engine. If you do not currently have these necessary components installed, the DLS IV installer will automatically download the latest version directly from Microsoft.com for you, and install them without any unnecessary intervention from you, the user.

The installation process begins with the DLS IV Updater. This updater will manage the rest of the installation process for you, and will provide updates in the future as DSC rolls out additional driver packs and feature updates.

- Logical grouping of options
- Additional modem support
- Multiple communication paths available (PSTN, GPRS, and TCP/IP)
- Supports the ALEXOR suite of products
- Supports the PowerSeries 9047
- Support for the PC1616, PC1832, PC1864 version 4.1 and higher
- Live updates automatically notify user that new panels or modules have been released

With logical grouping of options, wizards, and templates DLS has never been easier to navigate and use.

DLS IV will require the following applications to be installed:

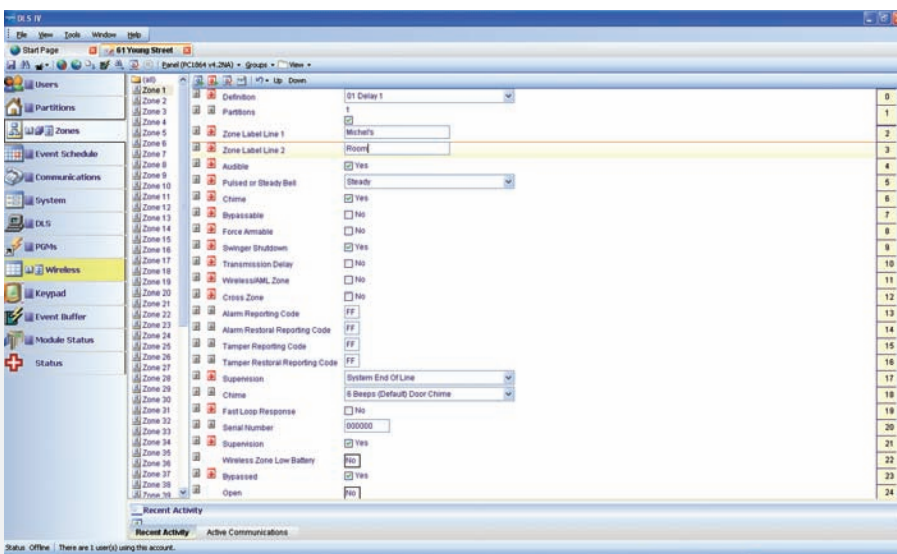
- 1) .NET Framework 3.5
- 2) SQL Server Express 2005
- 3) Visual C++ Runtime components

NOTE: DLS IV is required for GPRS downloading.

Available accessories:

PCLINK-SCW Direct-connect cable with serial DB-9 connector

MD-12 Serial modem for remote panel communications



DLS2002 Downloading Software

DLS2002 Downloading Software

DLS2002 downloading software by DSC is much more than just a software package for remotely programming control panels. It's also a great diagnostic tool, and includes features such as auto-detect panel type and version, upgrade wizard, and error checking. DLS2002 will help streamline installations, reduce programming time and decrease service calls. It gives you the ability to make changes to a system remotely in minutes, without having to visit the site. DLS2002 supports all current product software versions and will take your installation and service capabilities to the next level.

DLS2002SA System Administrator Software

The DLS2002SA System Administrator software is a perfect solution for large or multi-location business applications using the PC1864 or MAXSYS control panel. The software is simple to use and gives users the ability to view and change codes, access cards and schedules, as well as view system status, arm/disarm partitions, and view, sort and print the event buffer. The software can be found in the Products area of the DSC website under the password-protected software section.

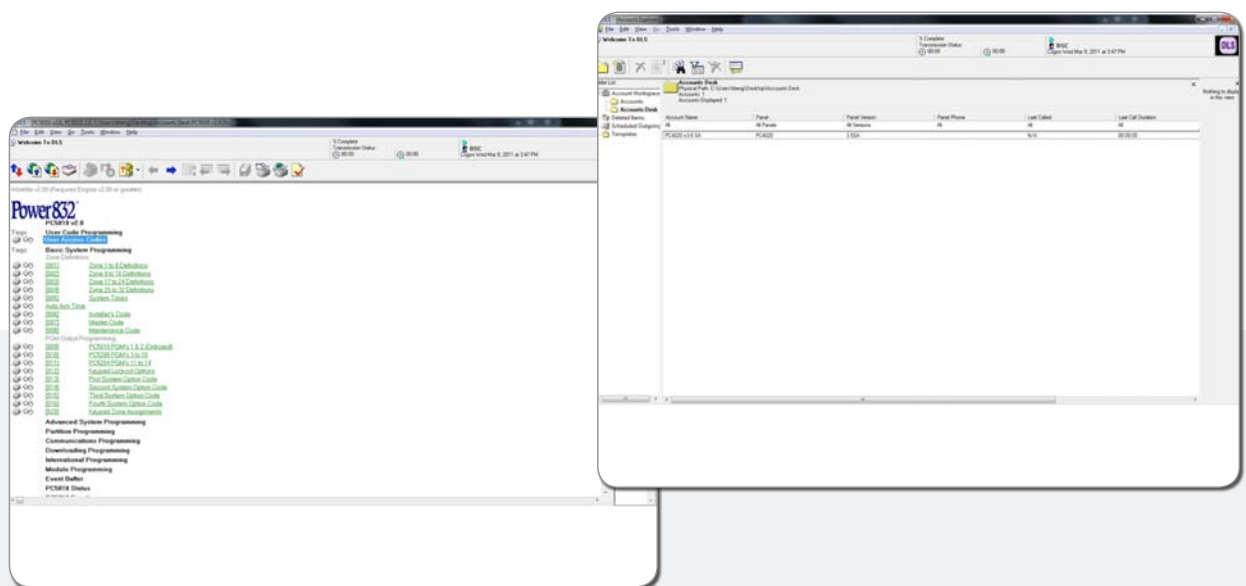
Features:

- Intuitive user interface
- Automatic panel and module version detection
- Automatic panel version correction
- Automatic module version correction
- Upgrade wizard
- Error checking
- Batch programming
- System installation graphic
- Supports version 4.2 and previous panels Available accessories: PCLINK-SCW
- Direct-connect cable with serial DB-9 connector MD-12
- Serial modem for remote panel communications

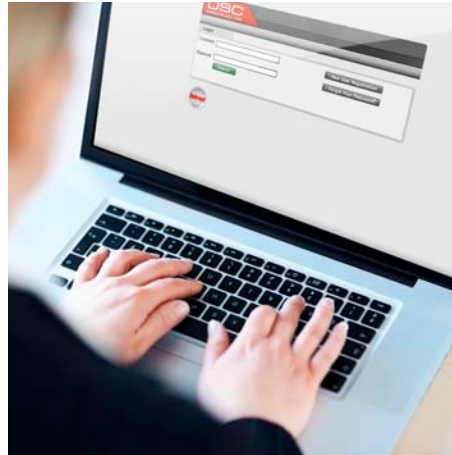
Available accessories:

PCLINK-SCW Direct-connect cable with serial DB-9 connector

MD-12 Serial modem for remote panel communications



DSC understands that security dealers everywhere need more than just great products, they deserve exceptional service and support as well. That is why we have committed resources to ensure we're in a position to help our customers as needed.



DSC Customer Service and Support

A dedicated team of Technical Support, Customer Service and Sales Support Representatives are available to provide security professionals with valuable expertise and in-depth product knowledge. The Customer Service and Support Center offers extended hours of services and access to all departments within DSC with multilingual support.

For any inquiries, general product information or the location of the nearest DSC distributor, please call 1 888.888.7838 (Toll Free) / +1 905.760.3000 or e-mail us at info@dsc.com.

For technical support issues, please call 1 800.387.3630 or e-mail tech@dsc.com.

DSC marketplace.com

The DSC marketplace.com is your primary method for ordering product-specific literature, associated marketing support materials and promotional items. To access this great service, please visit www.dscmarketplace.com and complete the short registration form. Your account will be activated within 48 hours allowing you to start browsing the site at your convenience. To ensure proper materials are being ordered, you can view thumbnail pictures as well as download PDF files of all items. For more information please visit www.dscmarketplace.com.

www.dsc.com

The DSC website is an intuitive, easy-to-navigate resource that provides security professionals with access to a wealth of product-specific information. Password-protected areas are tailored specifically for security dealers and offer the latest news on DSC products, corresponding events and launches, the latest technical support materials and diagnostic tools, and helpful industry and association links. Visit www.dsc.com to learn more.

Downloadable PDF versions of all DSC sales and specification sheets, images, end-user manuals, architect and engineer specifications, plus the complete DSC product catalog can be found on the website. Visit www.dsc.com to learn more.

Your most valuable tool may be on the web

The **dsc.com** website



Robust technical library • User and installation manuals • Software
• Product descriptions • Photography • Application notes •
Marketing materials • Solutions • Certifications

Visit dsc.com, your complete online resource for DSC product information.



DSC

A Tyco International Company

For more information on the products featured here
or on any other DSC products please call:

1 905.760.3000 | 1 888.888.7838 (Toll-free in United States & Canada)

E-mail: info@dsc.com

or contact your DSC Account Representative.

Please visit us at www.dsc.com

