

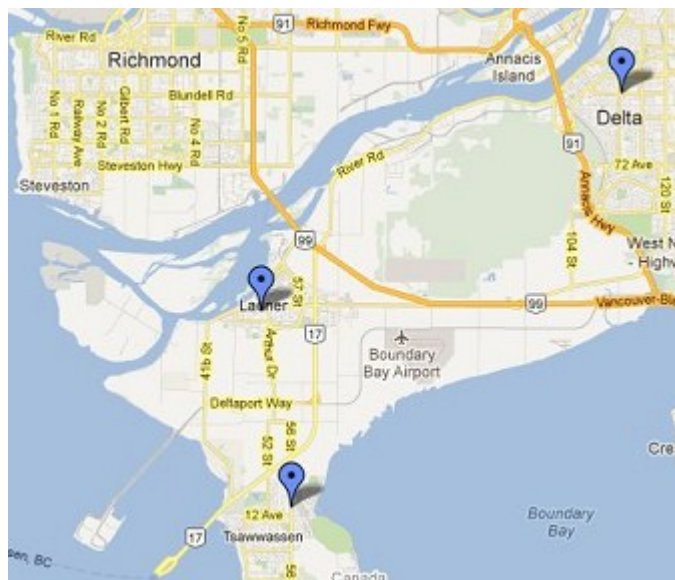
Urban Libraries Settlement Partnership (ULSP)

Community Immigrant Demographic Profiles

Delta

Delta District Municipality (Delta DM) is bounded by 0 Avenue to the north, 120 Street to the west, the Fraser River to the south, and the coastline to east.

There are three libraries in Delta.



Population

Total Population and Projection

	Delta		% Distribution—2011		% Distribution—2021	
	Male	Female	Delta	Metro Van	Delta	Metro Van
All ages	48,995	50,865	100.0	100	100.0	100
0 - 14	8,680	8,370	17.1	15.3	14.5	14.5
15 - 24	6,965	6,505	13.5	13.2	10.5	10.5
25 - 44	10,785	11,840	22.7	29.0	25.9	30.5
45 - 64	15,325	15,930	31.3	29.0	26.5	27.5
65 +	7,240	8,215	15.5	13.5	22.6	17.1

- In 2011, Delta had a **total population of 99,863 people**; an increase of 3.3% since 2006.
- Delta youth population is projected to decline and its older population is projected to increase. By 2021, Delta's seniors' population (65+) is projected to grow to 22.6% of its total population.

Immigrants by Period of Immigration

	Delta		Metro Van	
	#	%	#	%
Total Immigrants	27,020	100	831,265	100
Before 1961	3,255	12.0	64,007	7.7
1961 to 1970	3,330	12.3	68,995	8.3
1971 to 1980	4,605	17.1	119,702	14.4
1981 to 1990	4,345	16.1	136,327	16.4
1991 to 2000	7,790	28.8	290,943	35
2001 to 2006	3,690	13.7	151,290	18.2

In 2006, There were 27,090 immigrants living in Delta. Delta's recent immigrants comprised 13.7% of its total immigrant population, compared to Metro Vancouver's rate of 18.2%.

Immigration Trends - 1996 - 2011

	Delta			Metro Van
	Total Pop	Immigrants		% of Total Pop
		Number	% of Total Pop	
1996	95,411	23,005	24.1	34.6
2001	96,950	25,820	26.6	37.2
2006	96,723	27,025	27.9	39.3
2011	99,863	--	-	-

By 2006, the immigrant population in Delta **had increased by 17.5%** since 1996 compared to 23.9% for BC as a whole.

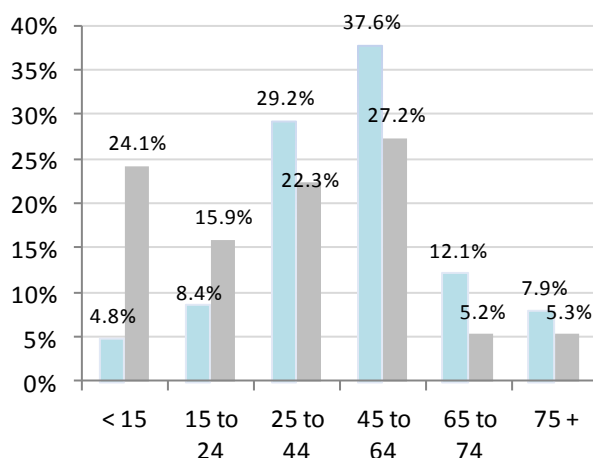
Urban Libraries Settlement Partnership (ULSP) Community Immigrant Demographic Profiles

Population by Gender: Immigrants vs. Canadian Born (Census 2006)

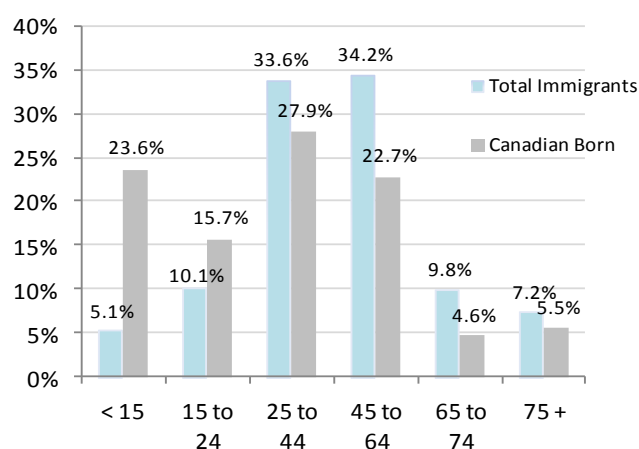
Total immigrants	Total	Male	Female	Total Canadian Born	Total	Male	Female
Number	27,020	13,015	14,005	Number	68,655	34,095	34,560
Percentage	100	48.2	51.8	Percentage	100	49.7	50.3

Age Distribution: Immigrants vs. Canadian Born (Census 2006)

Percentage of Total Population in Delta



Percentage of Total Population in Metro Van



In 2006, Delta had a higher percentage of working age immigrants (age 25—64), at 66.8% of its total immigrant population, compared to 49.5% of its Canadian born population.

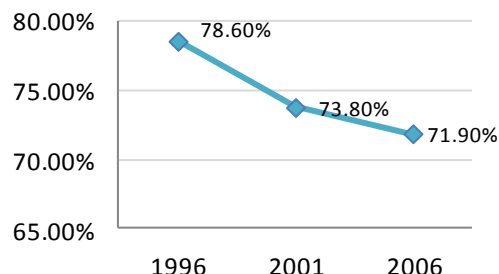
Immigrant Population by Place of Birth (Census 2006)

Immigrants' Top 10 Places of Origin - by total immigrant population (Census 2006) - 20% sample data

Delta DM			Metro Vancouver		
	#	%		#	%
Total immigrants	27,120	100	Total immigrants	831,265	100
India	6,730	24.8	China, People's Republic of	137,245	16.5
United Kingdom	4,485	16.5	India	90,090	10.8
Taiwan	1,365	5.0	Hong Kong, SAR	75,775	9.1
Philippines	1,290	4.8	United Kingdom	63,935	7.7
United States of America	1,220	4.5	Philippines	62,960	7.6
China, People's Republic of	1,205	4.4	Taiwan	40,805	4.9
Fiji	1,125	4.1	Korea, South	30,990	3.7
Germany	900	3.3	United States of America	24,780	3.0
Hong Kong, SAR	765	2.8	Viet Nam	22,945	2.8
Pakistan	530	2.0	Iran	21,610	2.6
Other Places	7,505	27.7	Other Places	260,130	31.3

Language (Census 2006)

% of Population with English as a Mother Tongue (Total Population)



The percentage of people in Delta whose mother tongue is English only has declined from 78.6% in 1996 to 71.9% for 2006.

Most Common Languages Spoken at Home by Immigrants

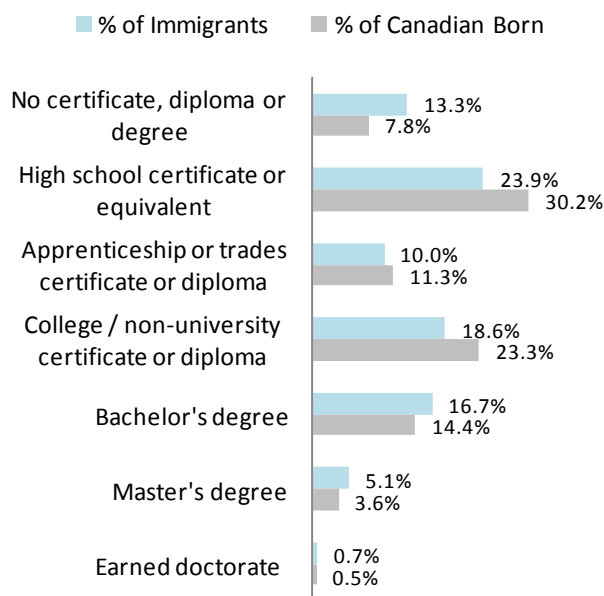
Delta DM	#	%
Total single responses	25,575	100
English	14,515	56.8
Punjabi (Punjabi)	4,940	19.3
Chinese (Mandarin / Cantonese) *	2,670	10.4
Hindi	595	2.3
Tagalog (Pilipino, Filipino)	505	2.0
Spanish	295	1.2
Other Languages	2,055	8.0

*It includes Cantonese, Mandarin and not specified Chinese.

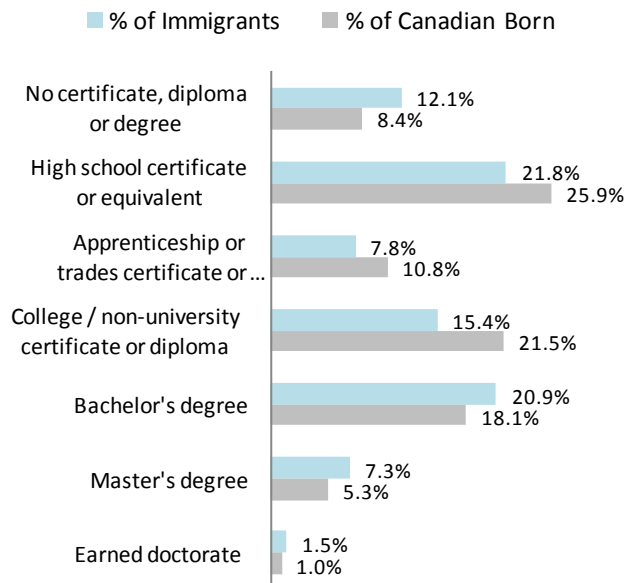
- In 2006, 56.8% of Delta's immigrants spoke English most often at home, compared to 41.8% for Metro Vancouver as a whole.
- In 2006, Punjabi ranked first of the most common non-official home language, at 19.3%, followed by Chinese at 10.4% and Hindi at 2.3%.

Education (Census 2006)

Highest Level of Education: Delta



Highest Level of Education: Metro Vancouver

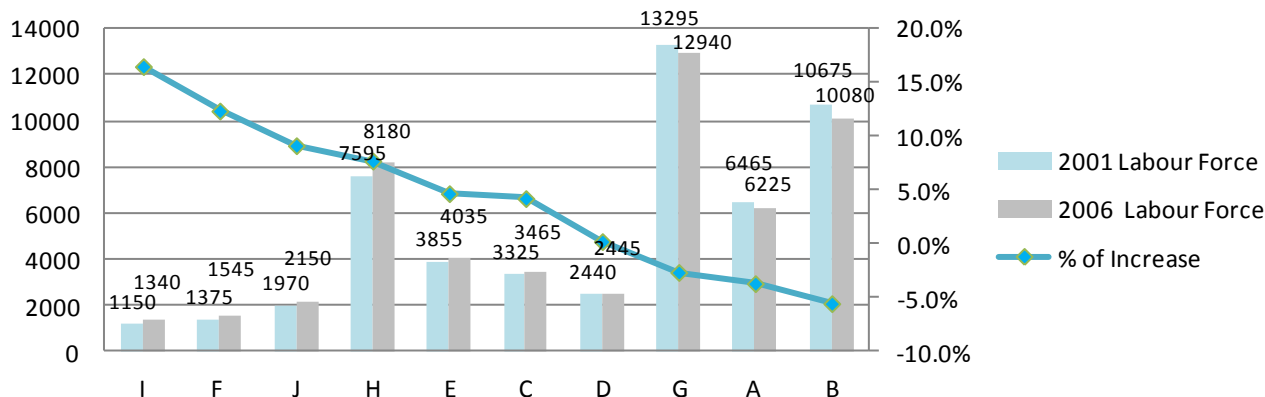


Note: Education level of immigrants / Canadian born aged 25 to 64 years

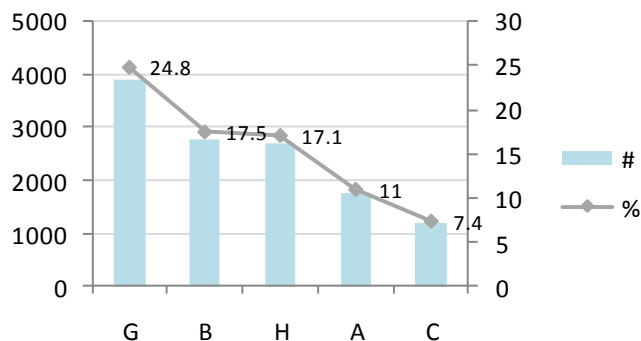
- In 2006, 22.5% of Delta's immigrant population had a bachelor degree or above, compared to 18.5% of its Canadian born population

Occupations by Population (Census 2006)

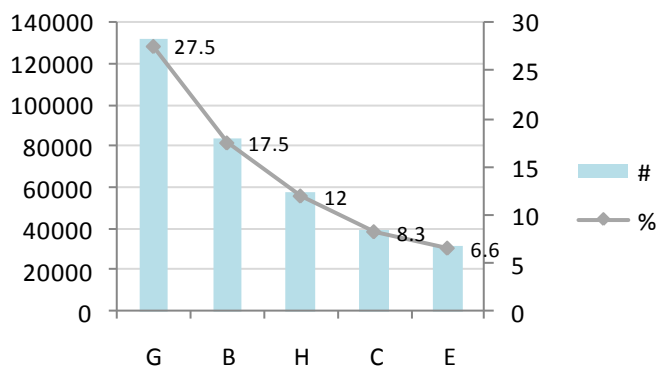
Occupational Growth by Total Population in Delta: 2001-2006



Top 5 Occupations by Immigrant Population: Delta



Top 5 Occupations by Immigrant Population: Metro Vancouver



All Occupations

- A Management occupations
- B Business, finance and administration occupations
- C Natural and applied sciences and related occupations
- D Health occupations
- E Occupations in social science, education, government service & religion
- F Occupations in art, culture, recreation and sport
- G Sales and service occupations
- H Trades, transport & equipment operators & related occupations
- I Occupations unique to primary industry
- J Occupations unique to processing, manufacturing and utilities

Note: The occupation definitions are adopted from Statistics Canada Census 2006

Urban Libraries Settlement Partnership (ULSP) Community Immigrant Demographic Profiles

Labour Force Activity and Income (Census 2006)

Percentage of the Total Labour Force

	Delta DM		Metro Vancouver	
	Immigrants	% of Total Pop	Immigrants	% of Total Pop
Population 15 years & over (Pop)	25,725	33.0%	787,380	44.9%
In the labour force (LF)	16,085	30.3%	489,605	41.9%

Employment / unemployment rates in 2005

	Delta		Metro Vancouver	
	Immigrants	Total Pop	Immigrants	Total Pop
Population 15 years & over (Pop)	25,725	77,925	787,380	1,752,385
In the labour force (LF)	16,085	53,105	489,605	1,169,720
Participation rate (LF/Pop)	62.5%	68.1%	62.2%	66.8%
Employment rate (Emp/Pop)	59.0%	65.0%	58.3%	63.0%
Unemployment rate (U/LF)	5.7%	5.1%	6.3%	5.6%

Median Income and Median Employment Income in 2005

	Delta DM		Metro Vancouver	
	Immigrants	Total Pop	Immigrants	Total Pop
Population, 15+, with income	24,560	73,760	745,795	1,659,535
Total 2005 income (median)	\$24,402	\$29,315	\$20,488	\$25,032
Total 2005 income (average)	\$32,639	\$38,313	\$30,533	\$36,123
Employment income (2005)				
Worked full year, full time	7,970	27,890	231,650	596,495
Full year, full time (median)	\$42,052	\$48,010	\$38,090	\$43,215
Full year, full time (average)	\$50,358	\$56,445	\$47,921	\$53,995