

SERIES BFRP

BELOW GROUND FIBERGLASS TANKS

Designed to meet AWWA D120, NFPA 22, NSF 61 and IAPMO standards for water storage tanks. These fiberglass tanks are lightweight and watertight making them the perfect vessel for any water application. BFRP tanks are manufactured at multiple locations to serve North America. Fiberglass tanks are significantly lighter in weight than both steel and concrete tanks which make them much easier to ship and install. Typical installation is one day. Our fiberglass tanks are designed to be the perfect solution for water tank projects, whether the site is in a rural community, a remote location or the middle of a major metropolitan city.

ADVANTAGES

- Designed to meet AWWA D120, NFPA 22, NSF 61 and IAPMO standards for water storage
- Single source warranty
- Prefabricated design means tanks are delivered install ready
- Configurable design optimizes site specificity
- Water tight
- Lighter weight than steel and concrete tanks

FEATURES

- Extended warranty options
- Tanks are constructed on a rotating steel mold during the automated manufacturing process results in a consistent tank wall thickness
- Single piece tank barrel construction
- Prefabbed for controls, electrics and pump connections
- Suitable for HS20 traffic loads (32,000 lbs/axle)*

⚠ WARNING

Rainwater supplied by BRAE rainwater harvesting systems is not potable water and is not intended for potable water applications. Do Not Drink Water supplied from BRAE rainwater systems and related equipment. Users shall determine the suitability of the product for the intended application before using.

*Refer to suitable tank burial depths and tank overburden requirements as calculated by the project design engineer.



Series BFRP Fiberglass Tanks

BRAE product specifications in U.S. customary units and metric are approximate and are provided for reference only. For precise measurements, please contact BRAE Technical Service. BRAE reserves the right to change or modify product design, construction, specifications, or materials without prior notice and without incurring any obligation to make such changes and modifications on BRAE products previously or subsequently sold.

Job Name _____
 Job Location _____
 Engineer _____
 Approval _____

Contractor _____
 Approval _____
 Contractor's P.O. No. _____
 Representative _____

HOW TO ORDER

BFRP - - - - - - - - - - - - - -

A B C D E F G H I J K L M

BFRP (Tank)

A Capacity (Gallons x 1,000)

B Tank Diameter (Feet)

4 Feet (4)
6 Feet (6)
8 Feet (8)
10 Feet (10)
12 Feet (12)

C Riser Position (see diagram below)

MA
MB
M2

D Riser Diameter (inches/mm)

24"/609.6mm (24)
30"/762mm (30)
36"/914.4mm (36)

E Riser Height** (inches/mm)

24"/609.6mm (24)
36"/914.4mm (36)
48"/1219mm (48)
60"/1524mm (60)
72"/1828.8mm (72)
84"/2133mm (84)

F Inlet Pipe (Position + Inches) -Includes calming inlet (Standard is Straight Pipe PVC)

NOTE: add an "F" for flanged Inlet Pipe

G Overflow Pipe (Position + Inches) (Standard is Straight Pipe PVC)

NOTE: add an "F" for flanged Overflow Pipe

H Tank Anchoring System***

Not Supplied (00)

Factory Supplied, includes deadmen, straps, turnbuckles (01)

Factory Supplied, includes straps & turnbuckles ONLY, contractor to supply concrete deadmen (02)

I Vent Diameter (Inches) (notes size of NPT coupling for vent pipe connection in top of tank barrel)

J Conduit Connection(s) (Riser) (Inches)

None (00)
Single 1" (25mm) Electrical Conduit Connection (01)
Double 1" (25mm) Electrical and Controls Conduit Connections (02)

K Plumbing connection (Riser) (Inches)

None (00)
Single 1" (25mm) NPT Connection (01)
Double 1" (25mm) NPT Connection - when direct makeup supply enters the tank (02)
Single 1-1/4" (32mm) NPT Connection (03)
Double 1-1/4" (32mm) NPT Connection - when direct makeup supply enters the tank (04)
Single 2" (50mm) NPT Connection (05)
Double 2" (50mm) NPT Connection - when direct makeup supply enters the tank (06)

L Equalization Pipe (Position L or R + Inches) (Standard is Straight Pipe PVC)

NOTE: add an "F" for flanged FRP Equalization Pipe

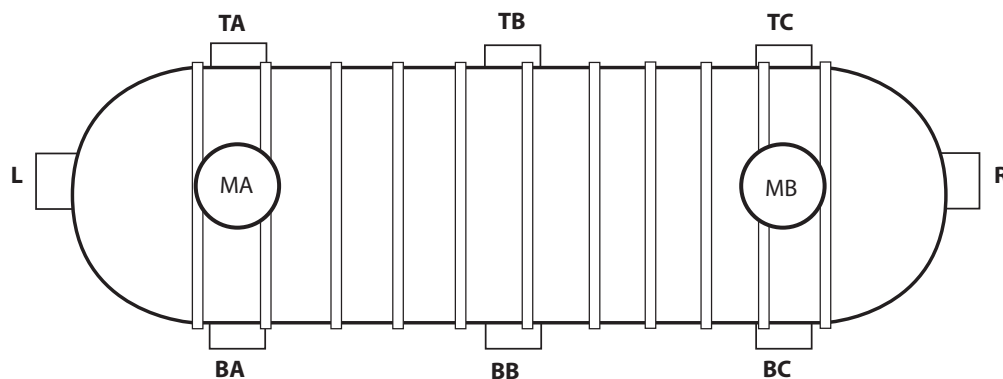
M NSF Liner

None (00)
Supply tank with NSF liner for potable water storage (01)

! WARNING

**Note: All BFRP tanks are shipped with a single riser constructed of FRP (no flange); second riser is standard PVC unless otherwise noted in design documents.

***CAUTION: It is the responsibility of the tank owner or tank owner's design engineer to determine the appropriate anchoring method and to design the anchoring system. Every site should be evaluated for buoyant conditions including but not limited to local water tables, flooding and trapped water. Failure to provide sufficient overburden and/or appropriate anchoring may result in tank failure and property damage may occur.

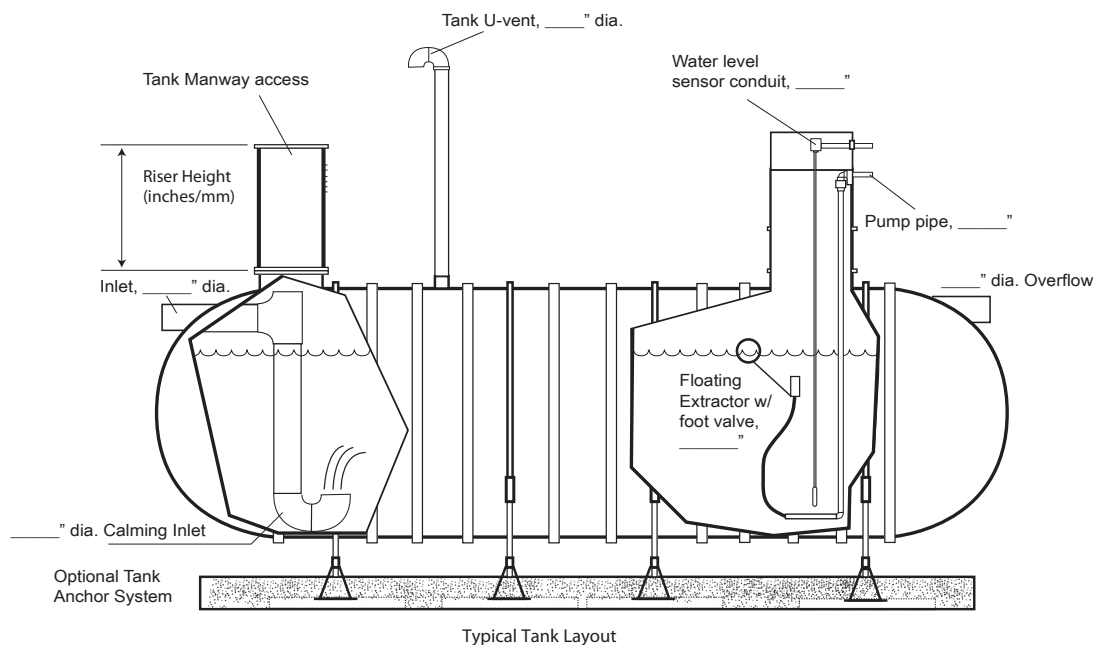


Tank Port Locations

TANK DIMENSIONAL CHART

	Tank Capacity		Tank Length		Nominal Weight	
	Gallons	Liters	ft./in.	mm	lbs.	kg
4' Dia.	600	2294	7' 2"	2184	320	145
	1000	3657	11' 0"	3353	400	181
6' Diameter	2000	7976	11' 1-1/2"	3391	1050	476
	3000	12579	16' 1/2"	5029	1500	680
	4000	14983	19' 8-1/4"	6000	1650	748
	5000	18984	24' 7-1/4"	7500	2000	907
	6000	23390	29' 6-1/4"	8998	2300	1043
8' Diameter	4000	15135	13' 11"	4236	1550	703
	5000	18726	16' 8"	5080	1800	816
	6000	22322	19' 5"	5944	2050	930
	8000	29511	24' 11"	7595	2450	1111
	10000	36703	30' 5"	9296	2900	1315
	12000	43892	35' 11"	10947	3350	1520
	15000	55059	44' 5-1/2"	13564	4500	2041
10' Diameter	10000	38827	20' 5"	6248	3600	1633
	12000	44944	23' 4"	7112	4000	1814
	15000	57175	29' 1-1/2"	8871	4750	2155
	20000	75523	37' 4-1/2"	11386	6100	2767
	25000	94522	45' 11"	13995	7550	3425
	30000	112866	54' 2"	16510	8750	3969
	35000	131865	62' 8-1/2"	19114	10050	4559
	40000	150863	71' 3"	21717	11600	5262
	45000	169859	79' 10"	24333	12900	5875
	50000	188298	88' 1"	26848	14200	6450

Contact BRAE Technical Support for specification details for 12 ft. diameter tank systems.



NOTE: Actual tank drawings and designs may vary.



A Watts Water Technologies Company

ES-BR-BFRP 1215



USA: Tel: (800) 772-1958 • Fax: (704) 485-8032 • www.braewater.com
 Canada: Tel: (905) 332-4090 • Fax: (905) 332-7068 • www.braewater.ca

© 2012 BRAE