



HARBOUR COLLECTION
Villa Home Designs

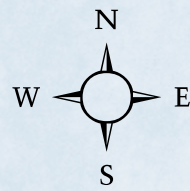


LAKE PARK™
at TRADITION

Area Features



LakePark at Tradition Community Siteplan



LEGEND:

- Single Family
- Villas
- Future Development
- Decorated Models
- Preserve
- Lakes
- TownPark



HARBOUR COLLECTION

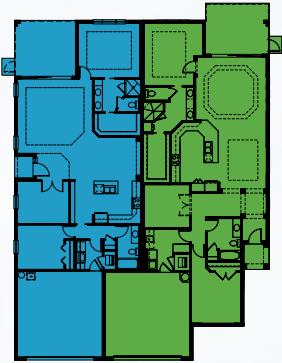
Buttonwood

2-3 Bedrooms, Great Room, 2 Baths,
2-Car Garage

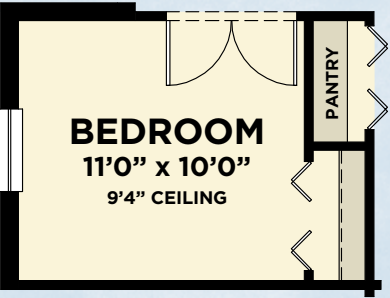
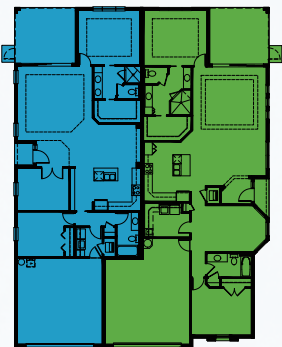
7' HIGH PRIVACY WALL

BUTTONWOOD PLAN
AVAILABLE PAIRINGS

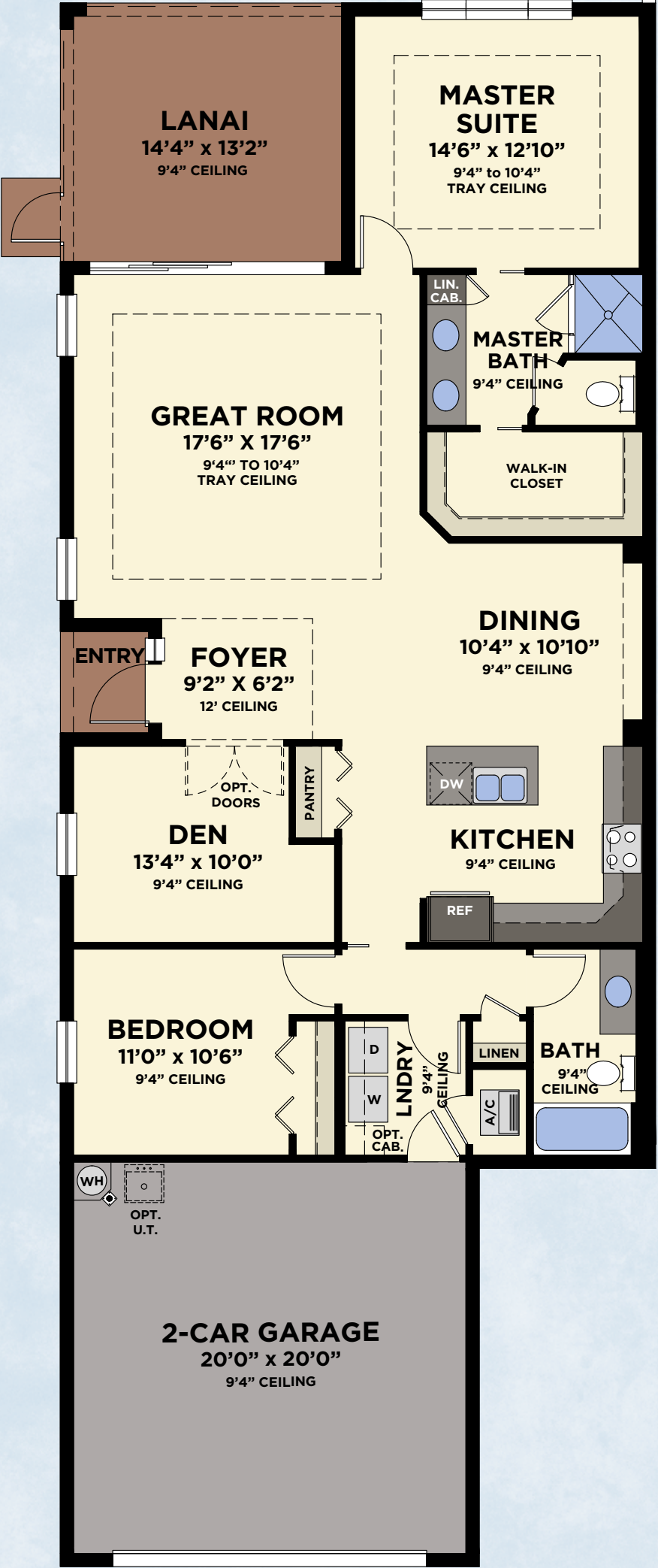
BUTTONWOOD/SPRUCE



BUTTONWOOD/BANYAN



AVAILABLE BEDROOM
VARIATION



FLOOR PLAN

BUTTONWOOD

Total Living Area	1,565 S.F.
2-Car Garage	441 S.F.
Entry	23 S.F.
Lanai	189 S.F.
Total	2,218 S.F.



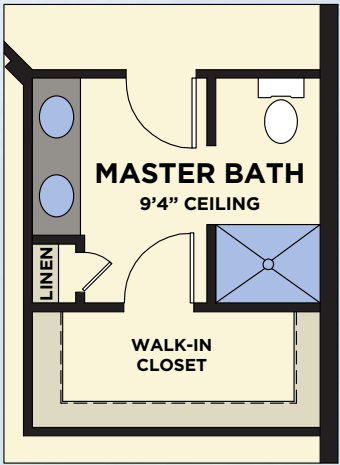
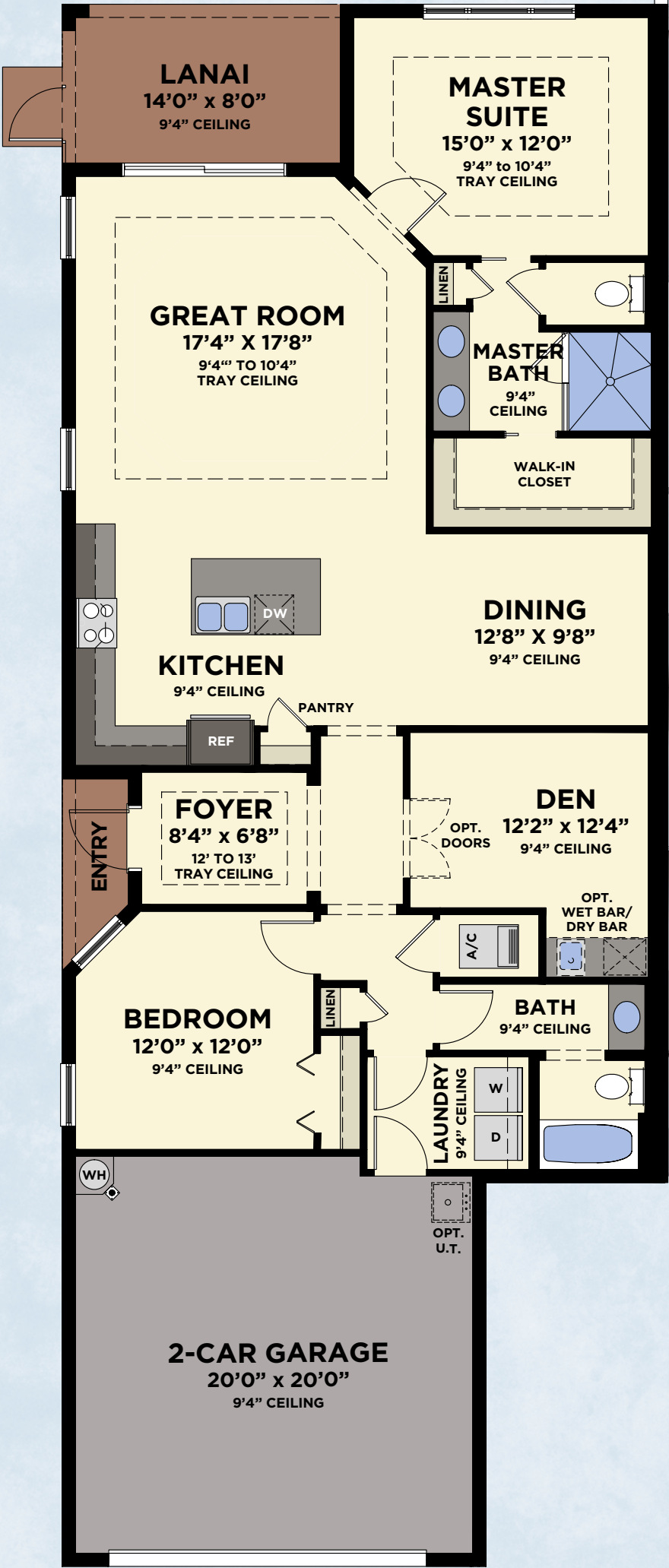
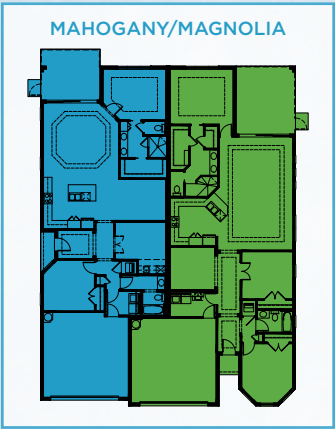
HARBOUR COLLECTION

Mahogany

2 Bedrooms, Great Room, Den, 2 Baths,
2-Car Garage

7' HIGH PRIVACY WALL

MAHOGANY PLAN
AVAILABLE PAIRINGS



AVAILABLE
MASTER BATH
VARIATION

FLOOR PLAN

MAHOGANY	
Total Living Area	1,616 S.F.
2-Car Garage	428 S.F.
Entry	27 S.F.
Lanai	112 S.F.
Total	2,183 S.F.



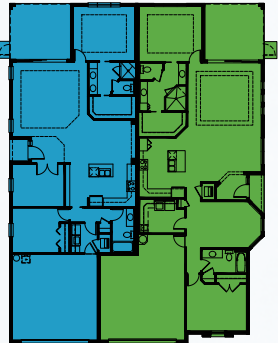
HARBOUR COLLECTION

Banyan

2-3 Bedrooms, Great Room, 2 Baths,
2-Car Garage

BANYAN PLAN
AVAILABLE PAIRINGS

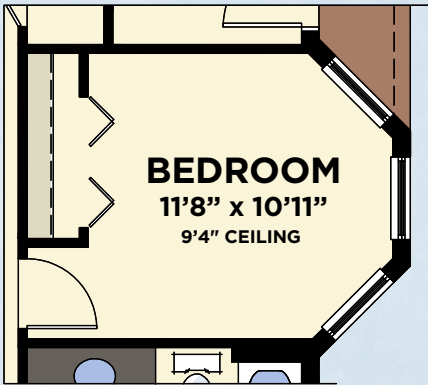
BUTTONWOOD/BANYAN



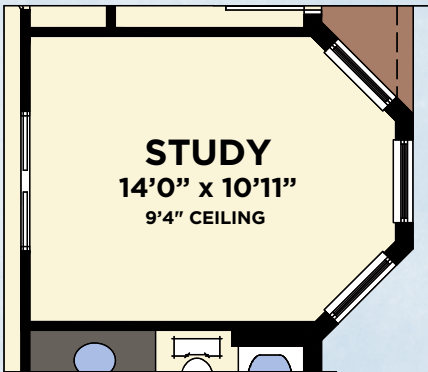
FLOOR PLAN

BANYAN

Total Living Area	1,735 S.F.
2-Car Garage	530 S.F.
Entry	26 S.F.
Lanai	138 S.F.
Total	2,429 S.F.



AVAILABLE BEDROOM
VARIATION



AVAILABLE STUDY
VARIATION



AVAILABLE
ELEVATION "B"
W/WINDOW
VARIATION

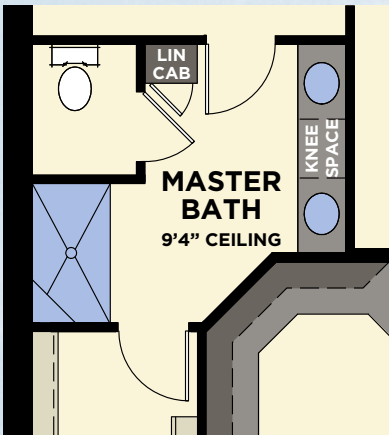


HARBOUR COLLECTION

Spruce

2 Bedrooms, Great Room, Den, 2 Baths,
2-Car Garage

7' HIGH PRIVACY WALL

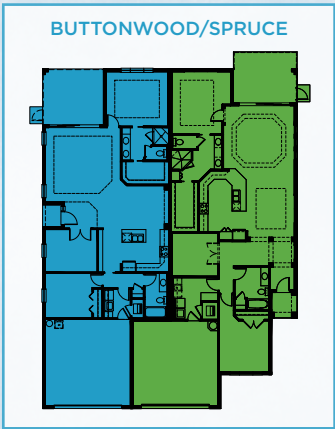


AVAILABLE
MASTER BATH
VARIATION



FLOOR PLAN

SPRUCE PLAN
AVAILABLE PAIRINGS



SPRUCE	
Total Living Area	1,780 S.F.
2-Car Garage	429 S.F.
Entry	36 S.F.
Lanai	120 S.F.
Total	2,365 S.F.



HARBOUR COLLECTION

Magnolia

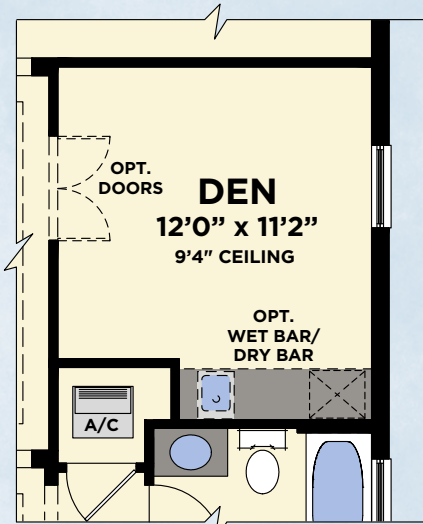
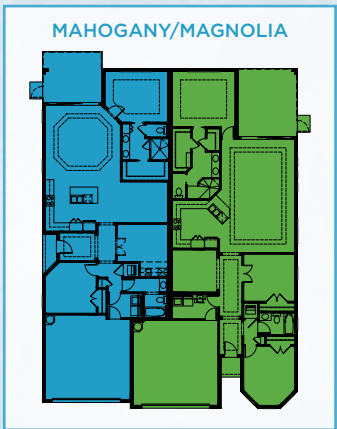
3 Bedrooms, Great Room, Hobby Room,
2 Baths, 2-Car Garage

7' HIGH PRIVACY WALL



AVAILABLE
MASTER BATH
VARIATION

MAGNOLIA PLAN
AVAILABLE PAIRINGS



AVAILABLE DEN
VARIATION

FLOOR PLAN

MAGNOLIA	
Total Living Area	1,862 S.F.
2-Car Garage	432 S.F.
Entry	22 S.F.
Lanai	140 S.F.
Total	2,456 S.F.



HARBOUR COLLECTION

Villas at LakePark

Buttonwood/Spruce



BUTTONWOOD/SPRUCE - ELEVATION A



BUTTONWOOD/SPRUCE - ELEVATION B

Buttonwood/Banyan



BUTTONWOOD/BANYAN - ELEVATION A



BUTTONWOOD/BANYAN - ELEVATION B

Mahogany/Magnolia



MAHOGANY/MAGNOLIA - ELEVATION A



MAHOGANY/MAGNOLIA - ELEVATION B



Included Premium Features


YOUR TRADITION LIFESTYLE

- Premier St. Lucie County location
- Convenient to shopping, services, employment & transportation - in the heart of it all
- Great downtown area with restaurants, Publix, shops and services. Events, concerts and festivals promote sense of community
- Stunning community master plan with lakes, landscaped open areas, retail shopping, office park and Florida Center for Innovation
- Neighborhood parks & trails

YOUR LAKEPARK NEIGHBORHOOD

- Tradition's premier community
- Maintenance-Free Living
- Prestigious entry features, landscaping and gated entry
- Beautiful master-planned pedestrian-friendly community with lakes, preserves, landscaped open areas and sidewalks on both sides of the street
- The Club at LakePark featuring:
 - State-of-the-art fitness center
 - Resort-style swimming pool
 - Shaded cabanas
 - Screened lanai for social gatherings
 - Outdoor seating area and grill
 - Event lawn
 - Residents Only dog park (divided in small & large dog areas)
- Full use of the TownPark Club and Recreation Center with:
 - State-of-the-art fitness center
 - Billiards Parlor
 - Resort-style swimming pool
 - Tennis & Basketball Courts
 - Bocce Ball & Pickleball Courts
 - Multimedia room with television, computer stations & library
 - Activity room with card tables
 - Wet bar & Coffee station
 - Waterworks area & playground
- Decorative street lighting

ENERGY EFFICIENT HOMES - SAVING YOU MORE MONEY PER MONTH ON YOUR UTILITY BILLS

- Neighborhood, home design and construction for energy efficiency & sustainability
-  - FPL® BuildSmart®
- Energy efficient double pane insulated low-emissivity windows, sliders and glass doors for improved energy performance, comfort and savings
- High efficiency **Carrier®** central air conditioning & heating
- 7-day programmable thermostat
- R-30 insulated ceiling and R-4.1 exterior walls
- Energy efficient 50-gallon quick-recovery water heater
- Energy Star® rated **GE** refrigerator and dishwasher
- Energy Star® rated bath exhaust fans
- Energy saving compact fluorescent light bulbs
- Architecturally accented, 8' tall insulated fiberglass entry door for extended weather resistant life
- **Moen®** water saving plumbing fixtures
- Luxurious **Mohawk®** stain-resistant, environmentally friendly low VOC carpeting with high performance carpet cushion
- **GE** Energy Star® side-by-side refrigerator with in-door ice and water
- Exterior vented **GE** microwave
- **GE** Energy Star® sound insulated automatic dishwasher
- Comfort height water saving elongated water closets

YOUR HOME

- Inspired elevations with elegant architectural appointments
- Seamless gutters on front elevations (Single-Family and Villa locations per plan)
- Covered entry and screened covered lanai
- Professionally designed landscaping and fully sodded homesite with irrigation system
- Elegant brick paver driveway, entry walkway and covered patio
- Decorative garage coach lights
- **Sherwin Williams®** Loxon exterior paint for lasting color retention and weather protection
- **CertainTeed** architectural 30-year designer asphalt roof shingles
- **Schlage®** satin nickel handleset
- **Schlage®** satin nickel levers on interior doors
- **Schlage®** entry deadbolt lock & door viewer
- Waterproof exterior electrical outlet and exterior hose connection for your convenience
- Entry door chime

YOUR PEACE OF MIND

- Design & construction in accordance with rigorous wind resistive requirements of Florida Building Code
- Steel-reinforced monolithic concrete foundation with vapor barrier
- Professionally engineered steel reinforced concrete block construction (per plan)
- Smoke/carbon monoxide detectors for your peace of mind
- Security system with 1 keypad and contacts on all operable windows and doors (excludes exterior garage doors)
- 8' tall tempered sliding glass door for your safety
- Professionally engineered truss systems
- Impact resistant embossed steel garage door
- **Taexx®** pest control system

WITHIN YOUR HOME

- Private 2-car garages with automatic opener and transmitters (per plan)
- Dramatic 9' & 10' ceiling heights (per plan)
- 18" **Mohawk®** ceramic tile throughout the main floor living areas of your home (per plan)
- **GE** washer & DURA DRUM™ dryer
- High speed structured wiring network - certified Cat-5E data lines and RG-6 quad shield coaxial cable
- Luxurious **Mohawk®** stain-resistant, environmentally friendly low VOC carpeting with high performance carpet cushion
- Knockdown textured drywall finish on ceilings
- Light orange peel finish on interior walls
- **Sherwin Williams®** high quality interior paint - low volatile organic compound (VOC) on walls and low VOC semi-gloss finish on doors and trim
- Decora-style light switches
- 8' tall 6-panel interior doors (Single-Family homes only)
- **Schlage®** satin nickel lever-style hardware
- Sculpted colonial baseboard and casing
- Air-conditioned walk-in closets (per plan)
- Solid surface window sills
- Pre-wired for telephone, cable TV and ceiling fans in family/great room & bedrooms per plan. Pre-wired for telephone in kitchen (per plan)
- Epoxy coated steel ventilated closet shelving



YOUR KITCHEN

- Spaciously designed gourmet kitchen featuring wood recessed panel cabinet doors with 42" upper cabinets
- Granite countertops with 4" backsplash
- Matching designer cabinet pantry or drywall pantry with close mesh ventilated shelving (per plan)
- Recessed lighting with energy-saving compact fluorescent light bulbs
- Stainless Steel **GE** appliances
- **GE** Energy Star® side-by-side refrigerator with in-door ice and water
- Free-standing **GE** self cleaning smooth-top electric range
- Exterior vented **GE** microwave
- **GE** Energy Star® sound insulated automatic dishwasher
- Double compartment (50/50) undermount stainless steel sink
- Decorator selected stainless steel **Moen**® faucet with integrated pull-out sprayer
- In-Sink Waste Disposal

YOUR OWNER'S SUITE AND BATHS

- Raised height vanities with wood recessed panel doors in master and secondary baths
- Granite countertops with 4" backsplash
- Pedestal sink in powder room
- **Mohawk**® ceramic tile floors and 8"x12" wall tile in full baths
- Decorator selected **Moen**® brushed nickel faucets in all baths
- Full width mirrors over vanities in master baths with recessed and decorator lighting

- Recessed tile soap niche in all baths
- Full width mirrors over vanities in secondary baths with recessed and decorator lighting
- Comfort height water saving elongated water closets
- Coordinated bath & towel accessories
- Large walk-in closet(s) (per plan)

YOUR MINTO

- Minto - over half a century of innovation, financial strength and integrity
- Award winning community, lifestyle and home designs
- Minto's nationally recognized construction quality
- Minto's exclusive **MasterCare**™ customer care program
- Personalized and convenient home mortgage and title services available thru one of Minto's approved lenders & Founders Title Services
- Ten-year structural warranty program

MINTO ONLY USES QUALITY BRANDS



**SHERWIN
WILLIAMS**®



GE imagination at work



© Minto Communities, LLC 2015. All rights reserved. Content may not be reproduced, copied, altered, distributed, stored or transferred in any form or by any means without express written permission. Artist's renderings, dimensions, specifications, prices and features are approximate and subject to change without notice. Minto, the Minto logo, LakePark and the LakePark logo are trademarks of Minto Communities, LLC, and/or its affiliates. CGC1519880. 2/15

